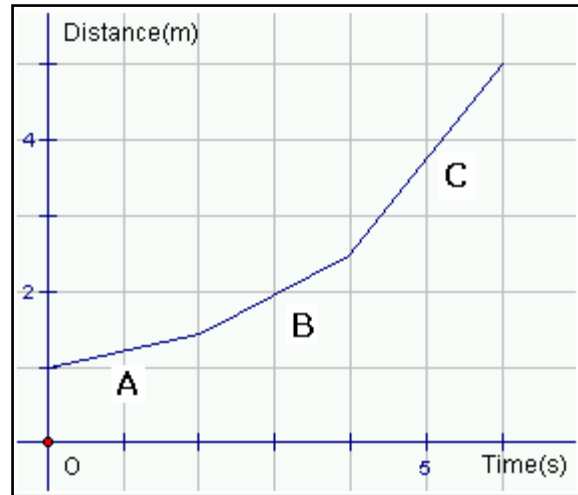


MATC9 Ch07.1 Key Concepts 3
Worked Example

Speed on Distance versus Time Graphs

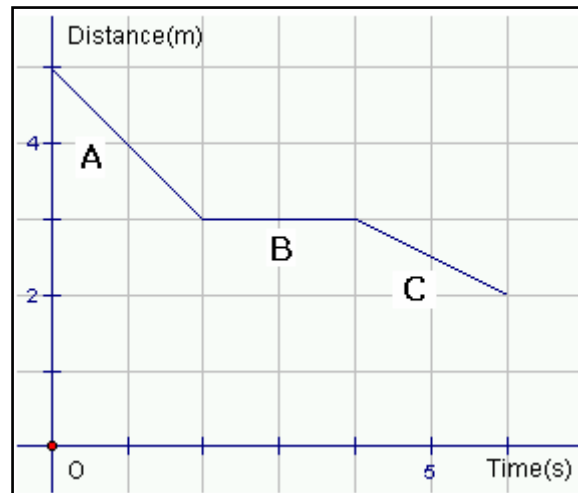
Example: Study the graph shown.
Which section shows the fastest speed?

Solution: Section C is the steepest.
Therefore, the speed is fastest in section C.

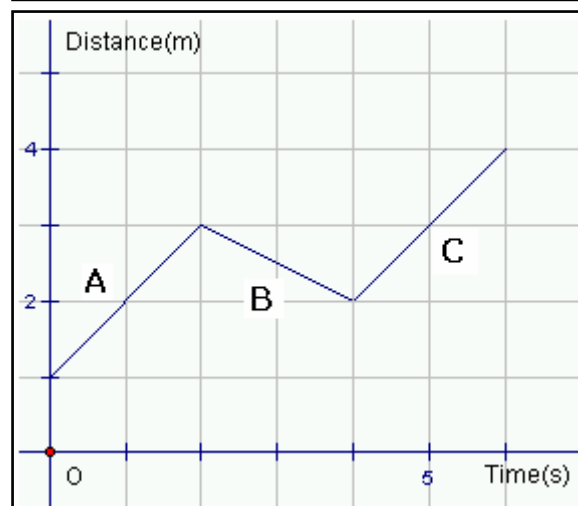


Practice:

1. Study the graph shown. Which section shows the fastest speed?



2. Study the graph shown. Which section shows the slowest speed?



Answers: 1. A 2. B