

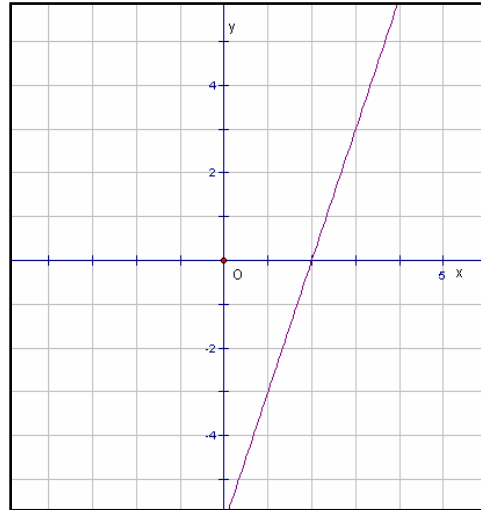
7.2 Key Concepts 2 Calculating Slope Worked Example

Example: Calculate the slope of the line shown.

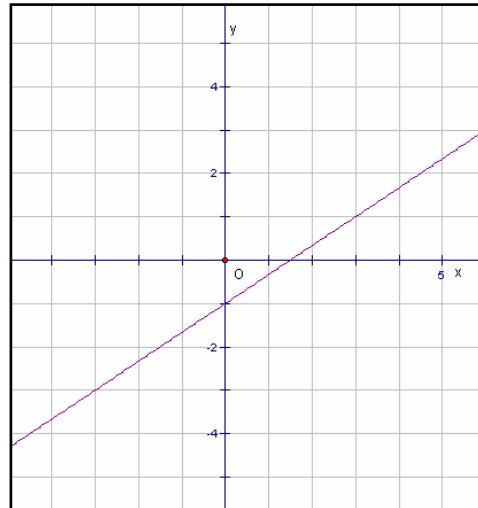
Solution: Select two convenient points on the line, such as $(1, -3)$ and $(3, 3)$. The run is 2 and the rise is 6. Therefore,

$$\begin{aligned} m &= \frac{\text{rise}}{\text{run}} \\ &= \frac{6}{2} \\ &= 3 \end{aligned}$$

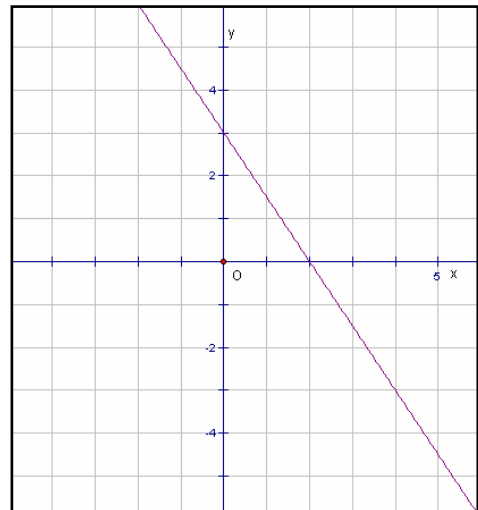
Practice:



1. Calculate the slope of the line shown.



2. Calculate the slope of the line shown.



Answers: 1. $\frac{2}{3}$ 2. $-\frac{3}{2}$.