

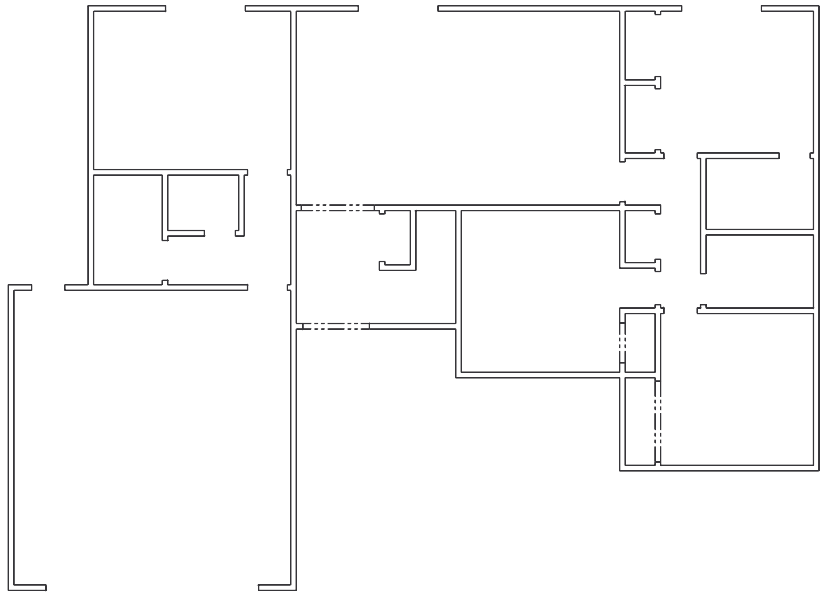
CHAPTER 11 EXERCISES

1. View, Zoom

Open the **PLAN.DWG** file you worked with in the last chapter. We will set up a number of named views to assist in moving around in the drawing very quickly.

- A. First use the *Zoom Extents* to display the floor plan as large as possible on your screen as shown in Figure AR11-1.
- B. Next use *Zoom Window* and select an area around the first bedroom (located in the lower right corner of the floorplan). The view should appear similar to Figure AR11-2. Type in *View* and select the *New* option. Enter **Bedroom1** in the *View Name* edit box.

Figure AR11-1



- C. Use *Zoom Extents* again, then *Zoom Window* and select an area around the two bathrooms (slightly above Bedroom1; see Figure AR11-3). Again, access the *View* command and select the *New* option. Enter the view name as **Baths**.

Figure AR11-2

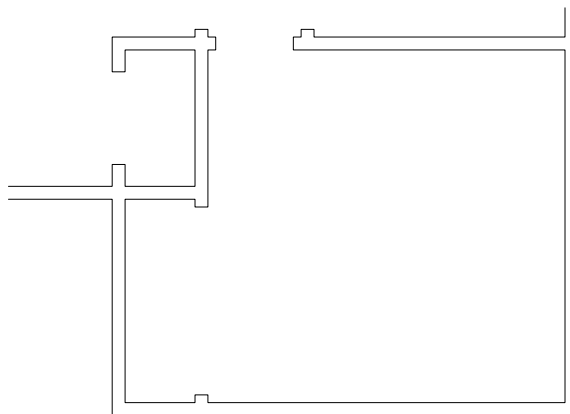
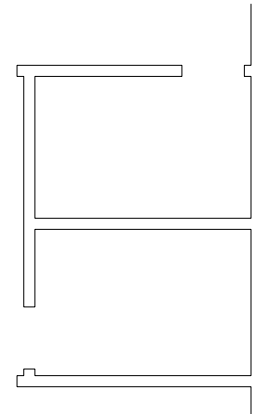


Figure AR11-3



- D. Repeat steps A through C until you have a *View* saved for each room in the house. Refer to Figure AR11-4 for the view names for each room. (Do not place room labels on the drawing.)

Figure AR11-4

