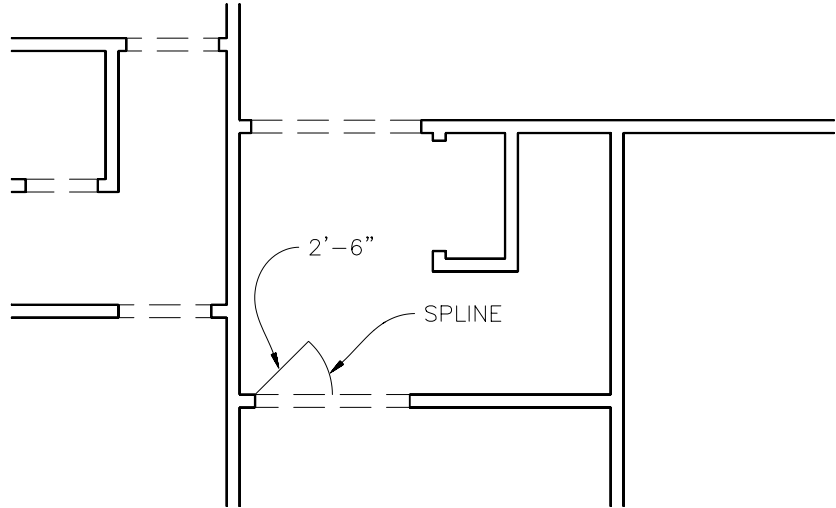


CHAPTER 15 EXERCISES

1. Line, Spline

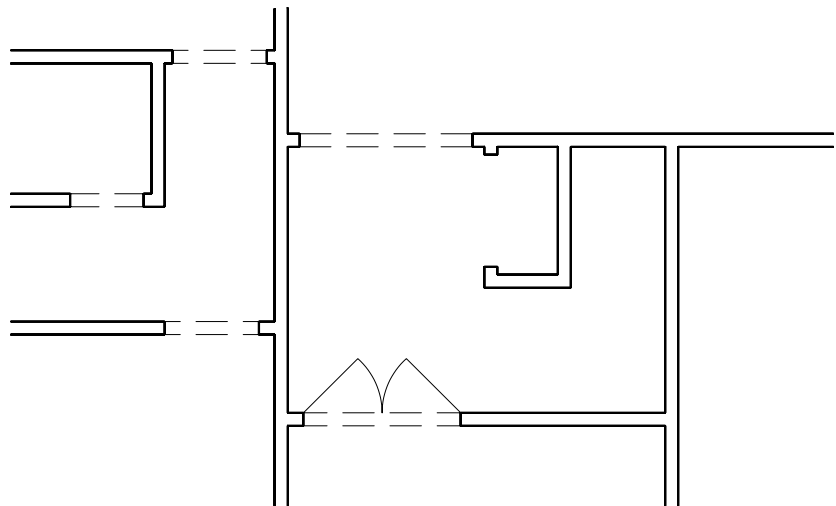
- A. Open **PLAN.DWG** so you can add doors to the house. Use any method you want to make layer **A-DOOR** *current*. **Zoom** to the entryway (Fig. AR15-1) to begin creation of the double 2'-6" doors. Draw a **Line** from the inside corner of the opening 2'-6" in length and at a 45 angle. Next, use the **Spline** command to draw the curved line from the end of the door back to the wall.

Figure AR15-1



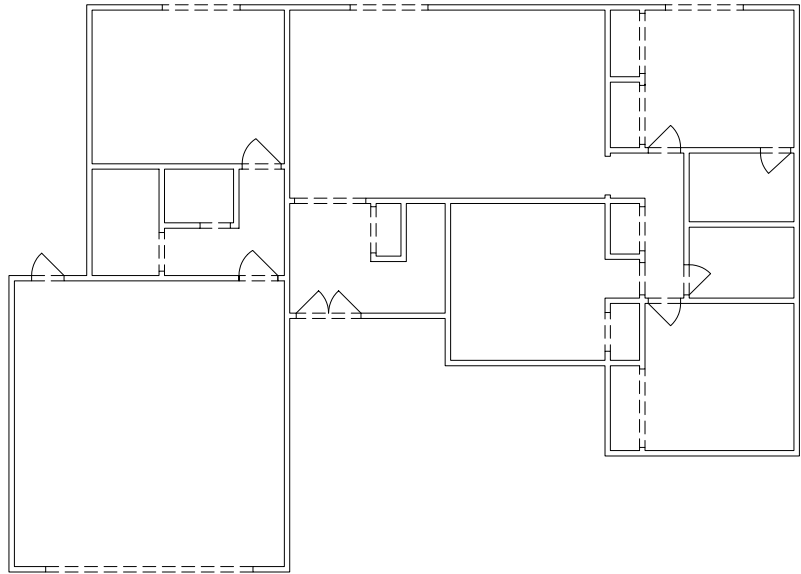
- B. Next use the **Mirror** command to copy a door to the other side (Fig. AR15-2).

Figure AR15-2



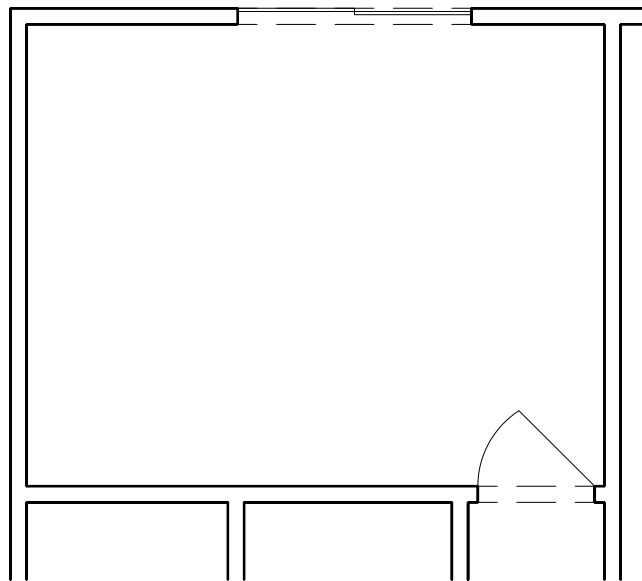
- C. Continue creating doors in the same manner for the remainder of the house (Fig. AR15-3).

Figure AR15-3



- D. The three sliding doors along the back wall are made by drawing a horizontal line 3'-0" in length, then offsetting that line 1" (Fig. AR15-4). Make sure you create sliding doors for all three openings along the back of the house.

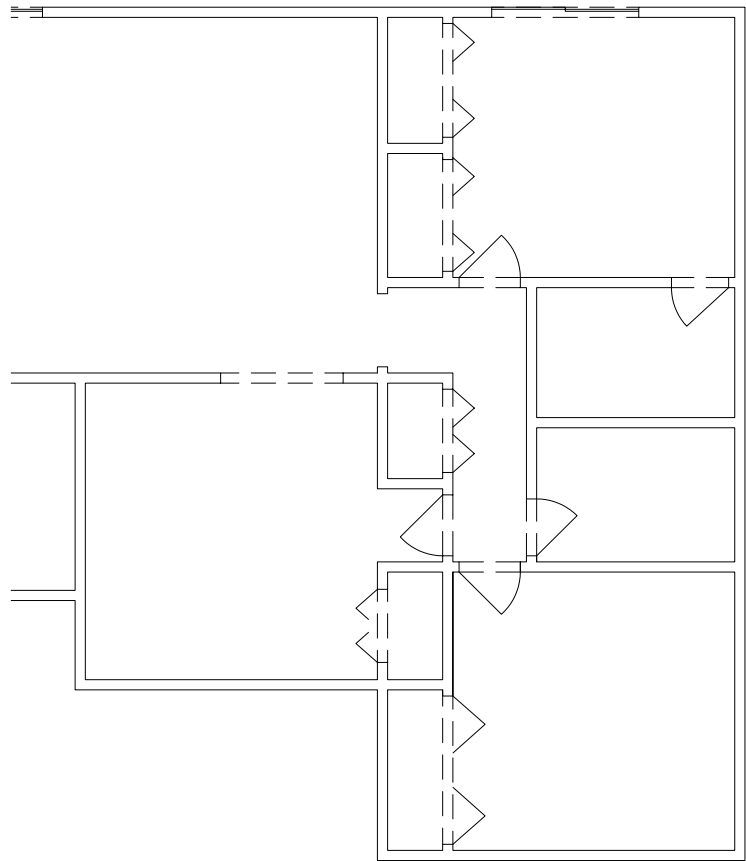
Figure AR15-4



- E. Complete the garage door by drawing a *Line* from the inside edge of the garage door opening to the other edge. Next *Offset* the *Line* 1" and draw a 1" vertical *Line* from *endpoint* to *endpoint*.

- F. Finish the doors by adding bifold doors to each of the closets. These are accomplished by drawing angled *Lines* as shown in Figure AR15-5. *Save* the drawing.

Figure AR15-5



2. *Xline, Ellipse, Rectangle*

Use *Xline* and *Line* to construct the floor plan shown in Figure AR15-6. For the exterior walls use a 6" width and 4" width for the interior walls. Use the *Rectangle* and *Ellipse* command to design the tub, laboratory, and toilet. Do not copy the dimensions. *Save* this drawing as AR15EX2.

Figure AR15-6

