

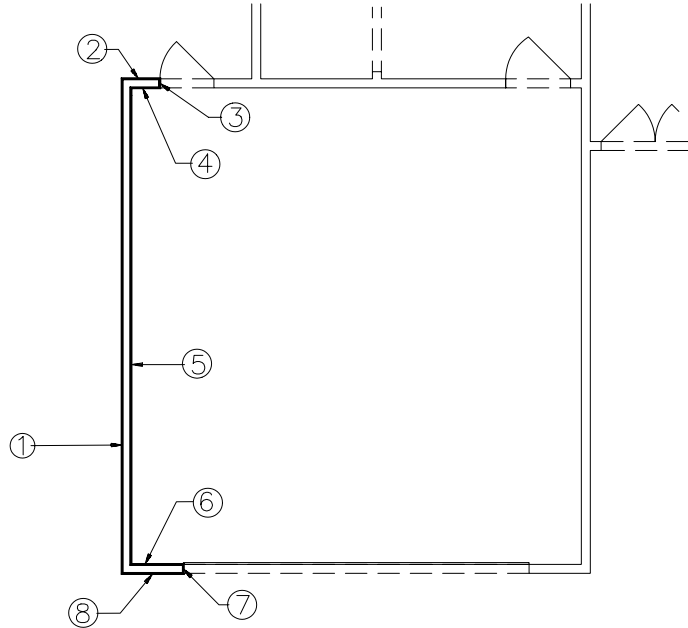
CHAPTER 16 EXERCISES

1. Pedit

Open **PLAN.DWG** that you worked on in the previous chapter. First, convert the outer walls to *Polylines*. **Zoom Window** around the garage. Issue the **Pedit** command and select line 1 (Fig. AR16-1). When AutoCAD asks if you want to turn the line into a Polyline, accept the default of "Y" by pressing **Enter**. Still in the **Pline** command, type in **J** to *Join* the remaining connected lines, then select lines 2, 3, 4, 5, 6, 7, and 8. Use **Pedit** again and change the polyline's *Width* to 1.

Continue with the **Pedit** command until all of the outer walls in the house have been converted to 1" wide Plines. **Save** the drawing.

Figure AR16-1

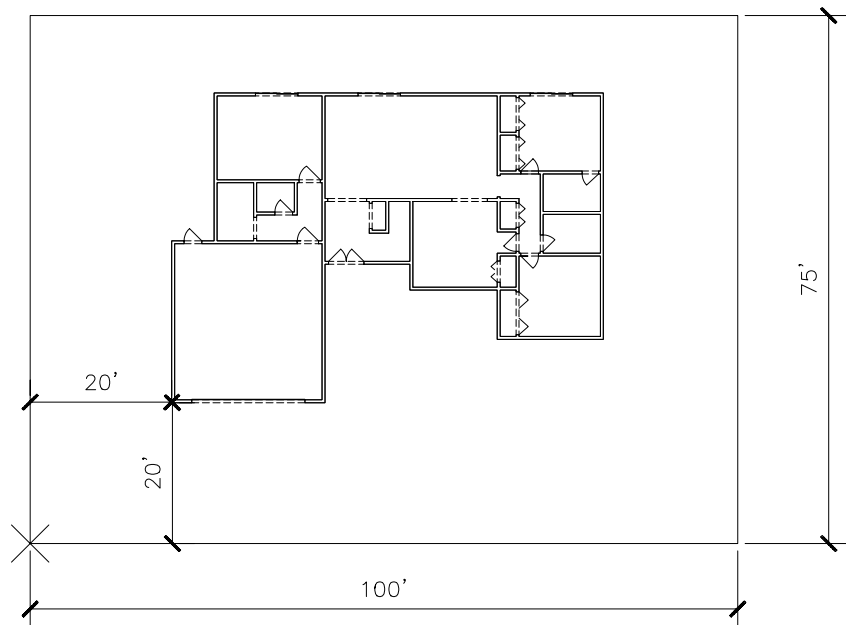


2. Drawing the property lines

Zoom .5X, and begin drawing a *Pline* that is located -20', -20' from the lower left corner of the garage. Draw the entire property line of 100' x 75' (Fig. AR16-2). Do not draw the dimensions.

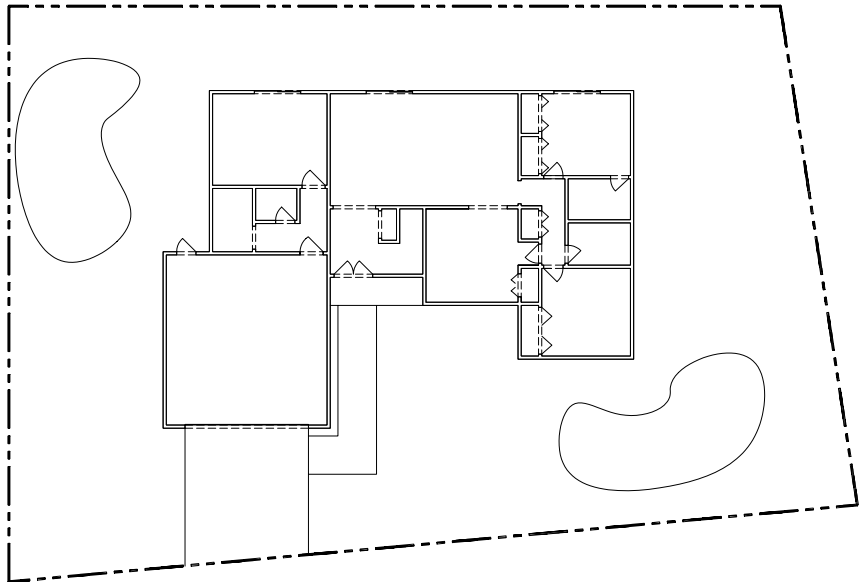
Create a *Layer* named **C-PROP** and change the *Linetype* to *Phantom* (you may have to **Load** the linetype if it has not been previously loaded). Change the *Color* to your choice. Use the **Ddchprop** command and place the property lines on the new layer. Now use the **Pedit** command, select the line and change the width to 3".

Figure AR16-2



Issue the *Pedit* command again and select the bottom horizontal Pline segment, type in *E* (Edit vertex), and type in *N* (Next) so the marker is located at the lower right vertex. Enter *M* (Move) and move the vertex by entering @10', 10'. Exit the Pedit command by typing *X*. Your completed property line should look like that in Figure AR16-3. *Save* the drawing.

Figure AR16-3



3. Adding sidewalks, driveway and planting beds

Create a *Layer* named *C-CONC*. Draw two *Lines* from the garage down to the property line to represent the driveway. Place a 5' wide sidewalk from the entryway down to the driveway as shown in Figure AR16-3. Use *Properties* to move these lines to the newly created layer.

Use the *Spline* command to create two free-form planting beds in the lawn. Create a new layer named *C-PLANTS* and place the shapes on this layer. *Save* the drawing.

4. Mline, Mledit

Draw the Foundation Plan shown in Figure AR16-4. Create the foundation walls as *Mline* objects (use *Mlstyle* to create a multiline style as shown for the foundation walls). Use *Mledit* to "clean up" the intersections as shown. Use *Plines* for the windows. Save the drawing as *FOUND*.

Figure AR16-4

