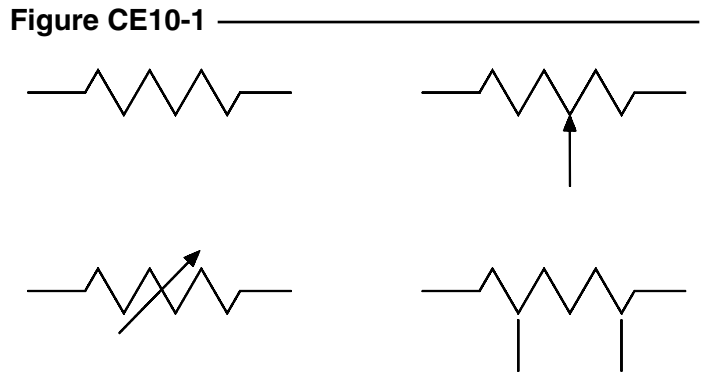


CHAPTER 10 EXERCISES

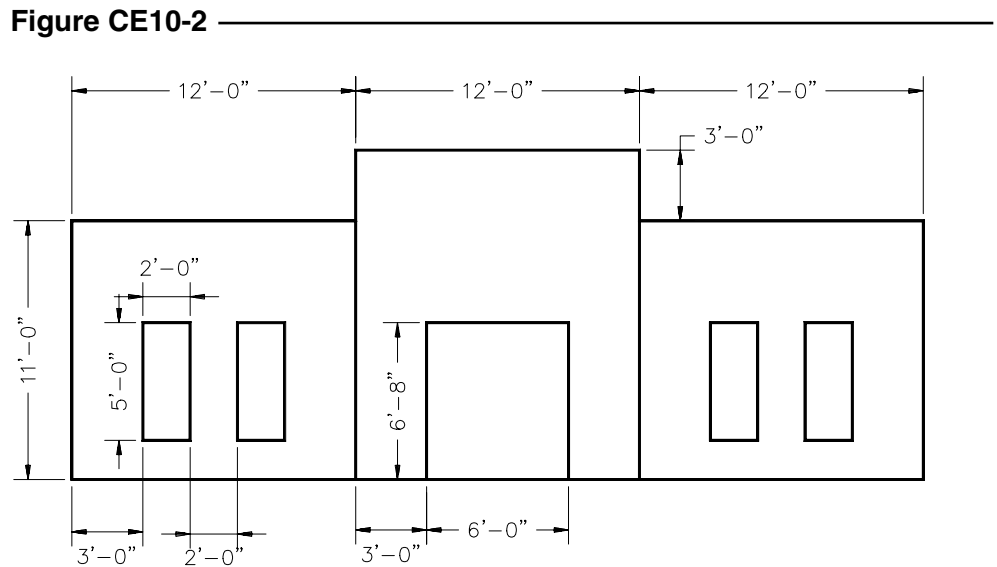
1. Resistors

Draw the resistor shown in the upper left quadrant of Figure CE10-1. You will need to estimate all dimensions. *Copy* this resistor three times and make necessary changes to complete the drawing as shown. **SaveAs RESISTORS.**



2. Concrete Tilt-Up

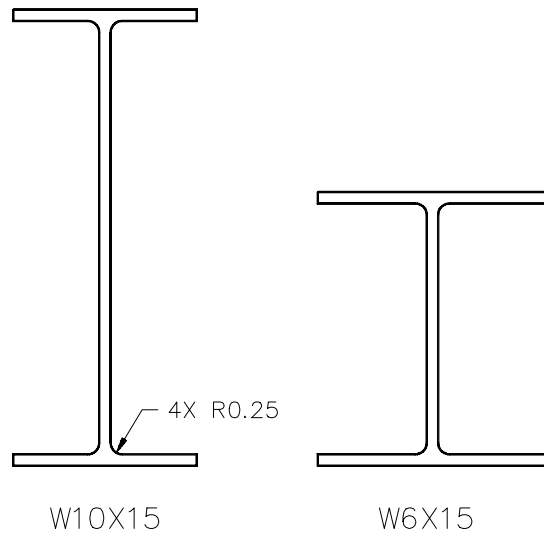
Complete the drawing of the concrete tilt-up wall in Figure CE10-2. Use the Mirror, Copy and Offset commands necessary to complete the drawing. **SaveAs TILT-UP.**



3. I-Beams

Open the drawing W10X15 that you created in Chapter 9 Exercises. Add *Fillet*s to the interior corners as shown in Figure CE10-3. Save the updated drawing. Complete this process also for the W6X15 drawing.

Figure CE10-3



4. Pad Layout

Complete the diagram of PCB Board pads shown in Figure CE10-4. Use *Plines* with *Width* to create the individual pads and then *Array* them in a circle. SaveAs PCB-PADS.

Figure CE10-4

