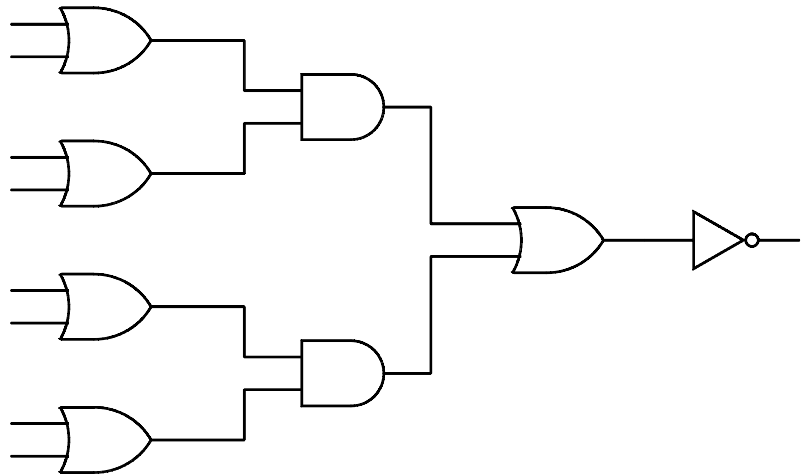


CHAPTER 20 EXERCISES

1. Logic Circuit

Open the drawing entitled **CE8EX1** from the Chapter 8 Exercises. Turn the **PICKFIRST** system variable on and turn **Grips** off. Select the objects first, then invoke the necessary commands (*Move*, *Copy*, etc.) to position each gate as shown in Figure CE20-1. Finally, connect the inputs and outputs from the gates with *Lines*. *SaveAs* **CE20EX1**.

Figure CE20-1



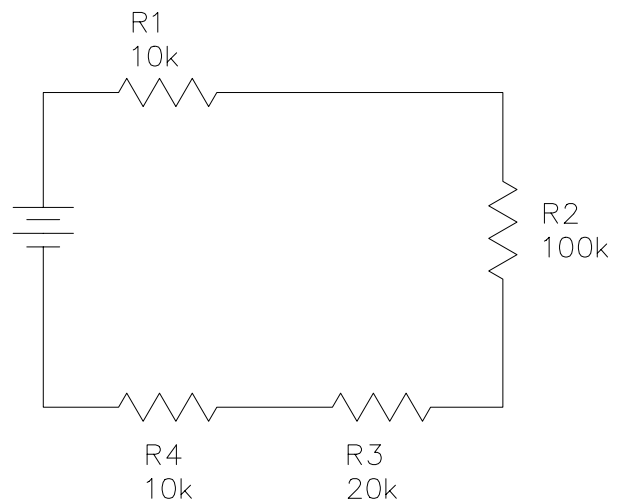
2. Selection Filters

Open the drawing **CE16EX1** from the Chapter 16 Exercises. Create a new **Layer** named **Openings**. Use the **Object Selection Filters** to filter out the objects on the **Windows** and **Doors** layers. Use **Properties** to change the layer of the filtered objects to **Openings**. *List* one of the windows to ensure the layer is now changed. *SaveAs* **CE20EX2**.

3. Electric Circuit

Open the drawing **CE10EX1** from the Chapter 10 Exercises. *Erase* all but the resistor in the upper right corner. Use the **Group** command so you can manipulate the resistor as one entity. *Copy* and *Rotate* the resistor and add additional *Lines* and *Text* to create the drawing shown in Figure CE20-2. *SaveAs* **CE20EX3**.

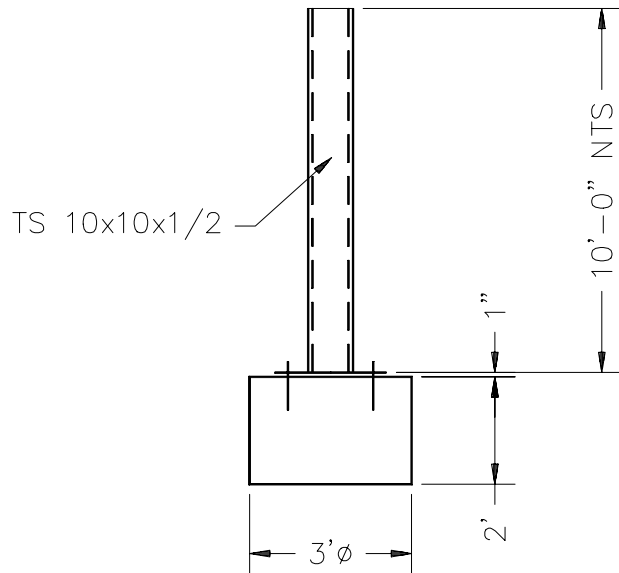
Figure CE20-2



4. Steel Framing

Figure CE20-3

Complete the drawing of the foundation pier and column shown in Figure CE20-3.



Group the items together and *Copy* them two times so there is 25' on center spacing of the columns. Add a floor line 6" above the top of the foundation pier (Figure CE20-4). *SaveAs* CE20EX4.

Figure CE20-4

