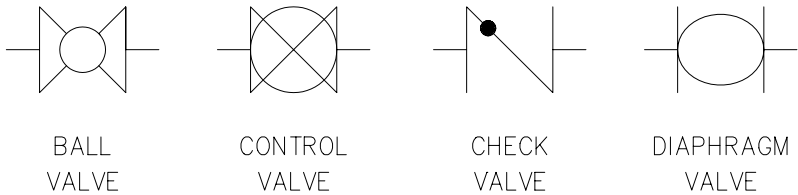


CHAPTER 21 EXERCISES

1. Piping Valves

Complete the drawing of the four valves shown in Figure CE21-1. Each of the valves should be 1 unit long so that they can be accurately scaled when *Inserted* into a drawing. Create a **Block** for each of the valves. *SaveAs* CE21EX1.

Figure CE21-1



2. Titleblock Creation and Insertion

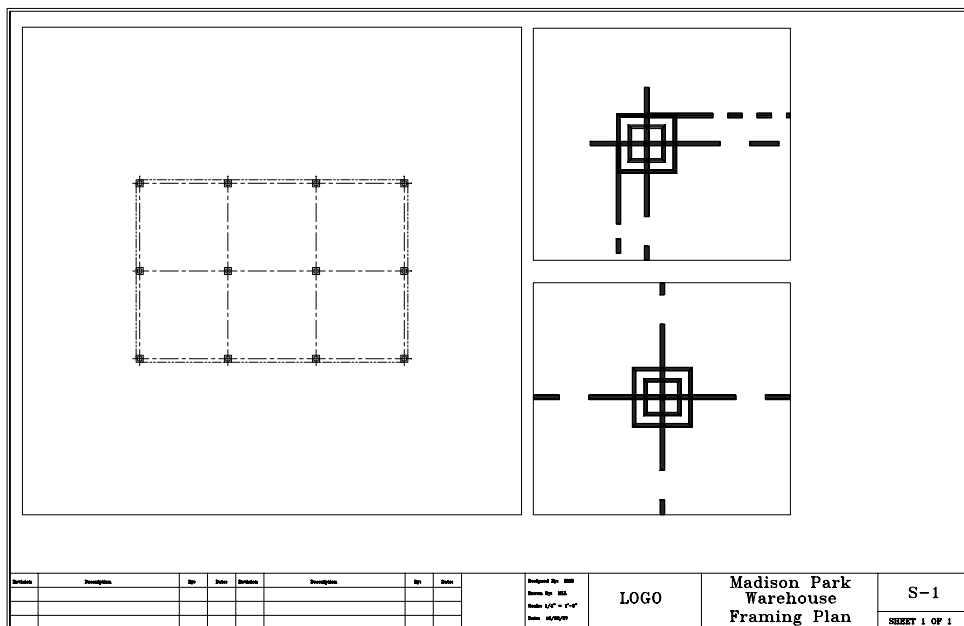
Begin a *New* drawing. Create *Layers* named **Tblk** and **Tblk_text**. On layer **Tblk** draw a *Rectangle* 35"x23". *Offset* the rectangle to the inside by .125". Create a titleblock similar to the one shown in Figure CE21-2 in the lower right corner. Create a logo for your own company in the space indicated as "Logo." Create a revision block in the lower left corner. *SaveAs* **TBLK_D**, and *Close* the drawing.

Figure CE21-2

Designed By: BML Drawn By: BML Scale: 1/4" = 1'-0" Date: 10/20/99	LOGO	Madison Park Warehouse Framing Plan	S-1 SHEET 1 OF 1
--	------	---	---------------------

Open the drawing **CE16EX2** from the Chapter 16 Exercises. Activate a *Layout* and *Insert* the **TBKL_D** drawing into paper space. Create *Viewports* into model space on a new separate layer. There should be three viewports as shown in Figure CE21-3.

Figure CE21-3

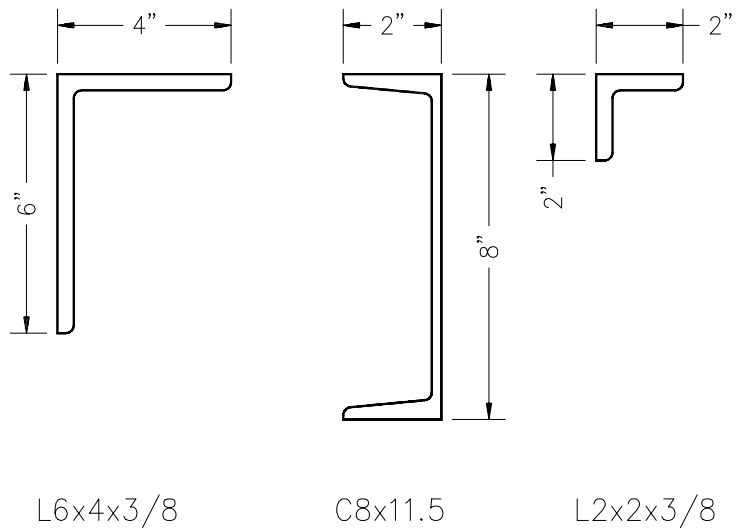


Use appropriate *ZoomXP* factors to achieve the scale of the plan view at 1/8"=1'-0" and the scale for the detail drawings at 1"=1'-0". *SaveAs* CE21EX2.

3. Pump Station Section

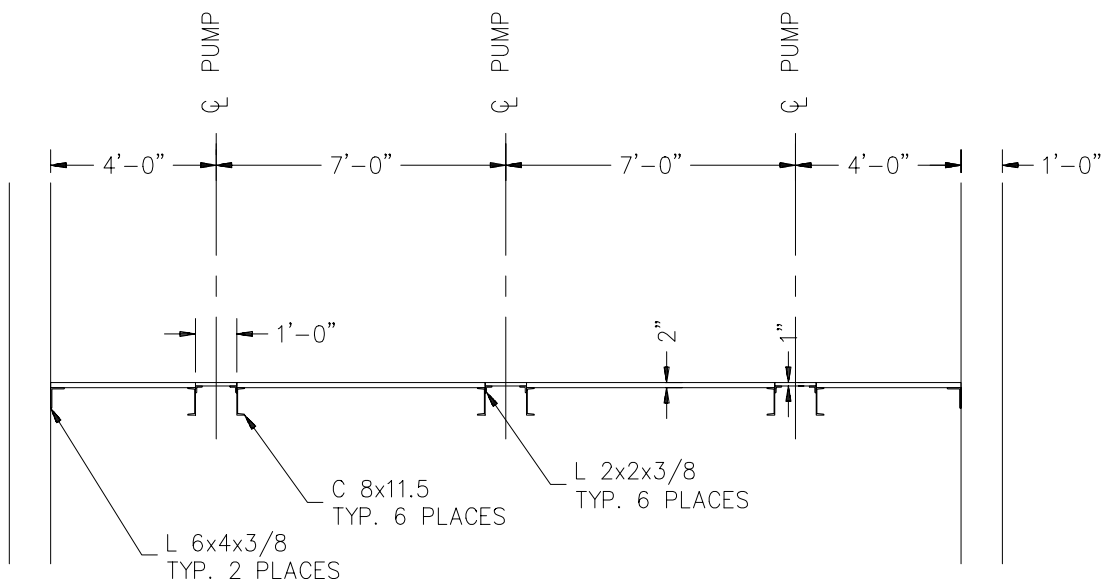
Begin a *New* drawing. Create the three steel sections shown in Figure CE21-4. Next, create *Wblocks* of the three steel sections. The names for the *Wblocks* should agree with the labels in the figure.

Figure CE21-4



Draw the section through the pump station as shown in Figure CE21-5. *Insert* each of the *Blocks* you created several times to complete the drawing. Remember to use different *Layers* for the different features of the drawing. You do not need to add dimensions or text at this point. *SaveAs* PUMPSTA.

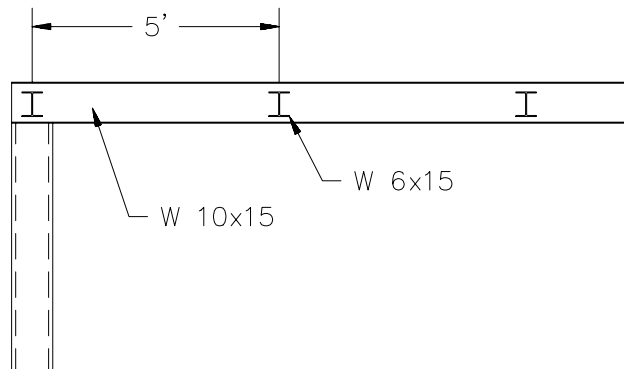
Figure CE21-5



4. Steel Framing

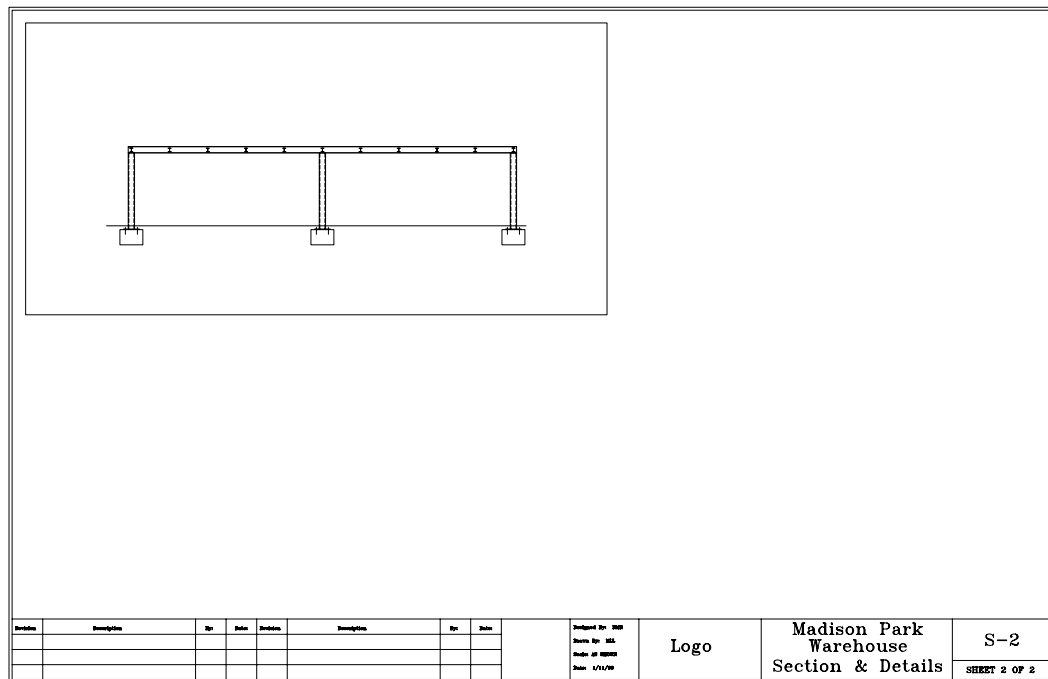
Open the drawing CE20EX4 from the Chapter 20 Exercises. Insert W6X15 and W10X15 into the drawing and use these Blocks to create the framing for the roof as shown in Figure CE21-6.

Figure CE21-6



Activate a Layout and Insert TBLK_D. Create a Viewport as shown in Figure CE21-7. The scale for this view should be 1/4"=1'-0". SaveAs FRAMING.

Figure CE21-7



Revised	Description	By	Date	Description	By	Date	Designed By: BDD	Logo	Madison Park Warehouse Section & Details	S-2 SHEET 2 OF 2
							Drawn By: BDD			
							Date: 1/1/99			