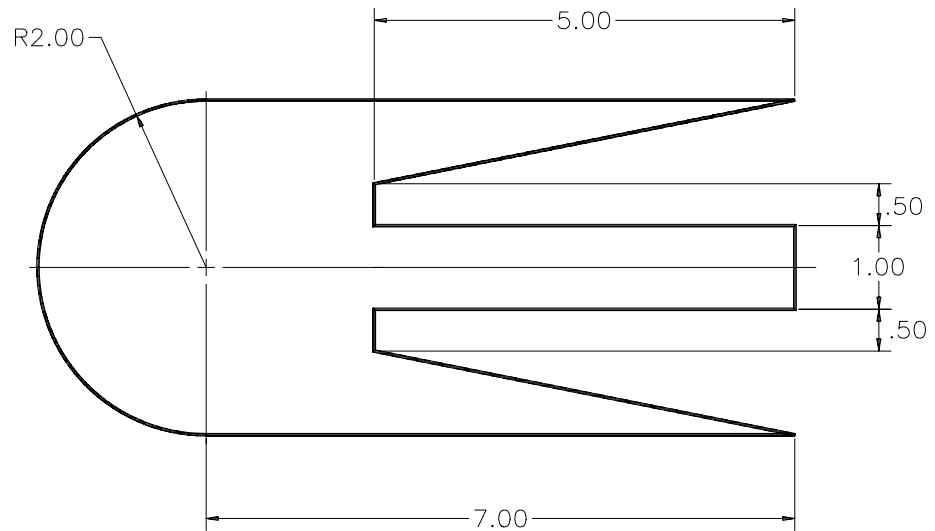


CHAPTER 8 EXERCISES

1. Polylines

Use the *Pline* command to complete the drawing shown in Figure ME8-1. The *Pline* should be continuous and the R2.00 radius is created with the *Pline Arc* option. *SaveAs CH8EX1-M.*

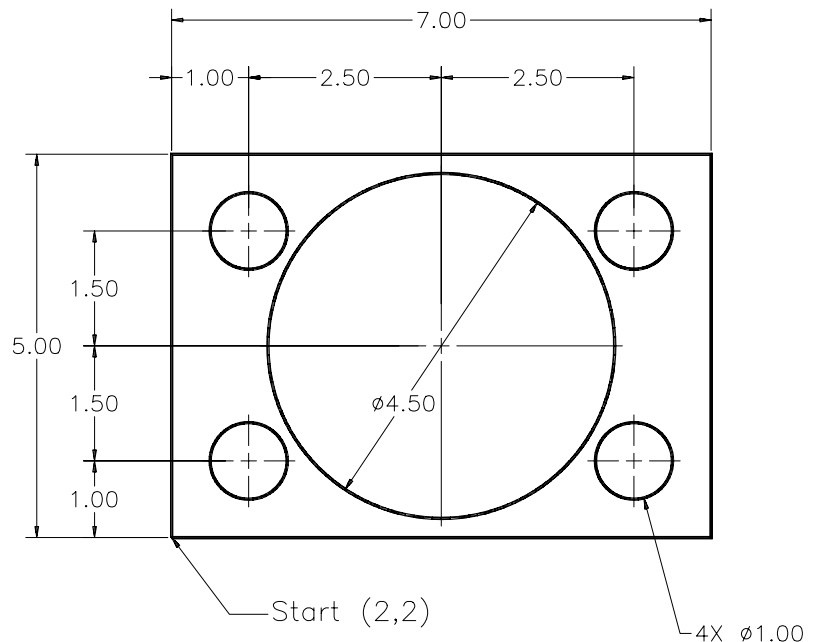
Figure ME8-1



2. Plate

Complete the drawing of the plate in Figure ME8-2. Use the *Line* command and begin at point 2,2. The center of the 4.50 diameter *Circle* is obtained by calculating the distance starting at 2,2. (For example, the X value would be $2 + 1 + 2.5 = 5.5$ and the Y value would be $2 + 1 + 1.5 = 4.5$.) Add the additional *Circles* using the same method. *SaveAs CH8EX2-M.*

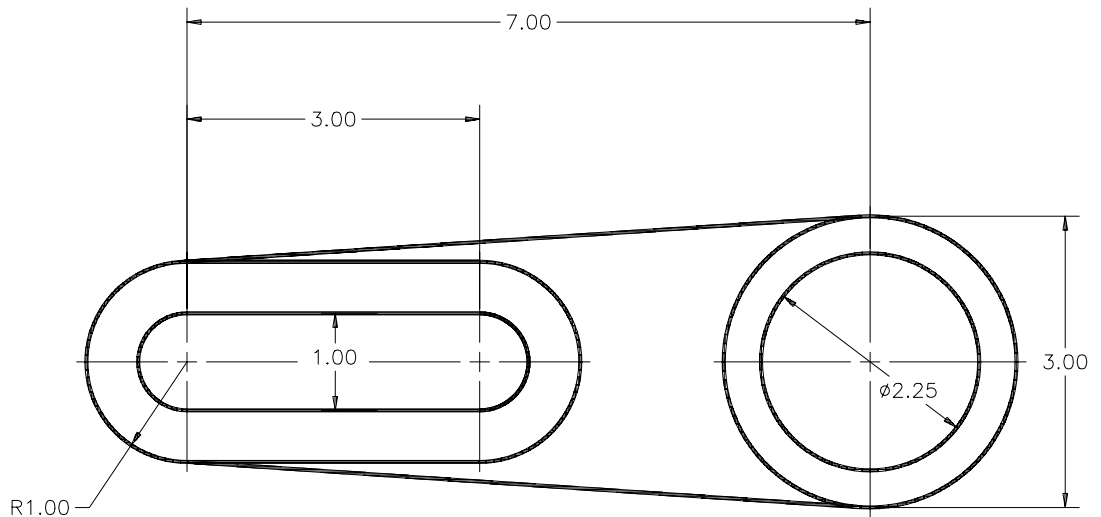
Figure ME8-2



3. Hinge Bracket

Complete the drawing of the hinge bracket in Figure ME8-3. It may be helpful to draw some construction lines in order to position the *Arcs* correctly. *Erase* the construction lines when the *Arcs* are complete. The outer two object lines are drawn using the *OSNAP Tangent* option from the large *Circle* on the right to the outer *Arc* on the left. *SaveAs CH8EX3-M.*

Figure ME8-3



4. Hinge

Complete the drawing of the hinge in Figure ME8-4. Use whatever coordinate entry method you prefer. Do not include any dimensions or text. *SaveAs CH8EX4-M.*

Figure ME8-4

