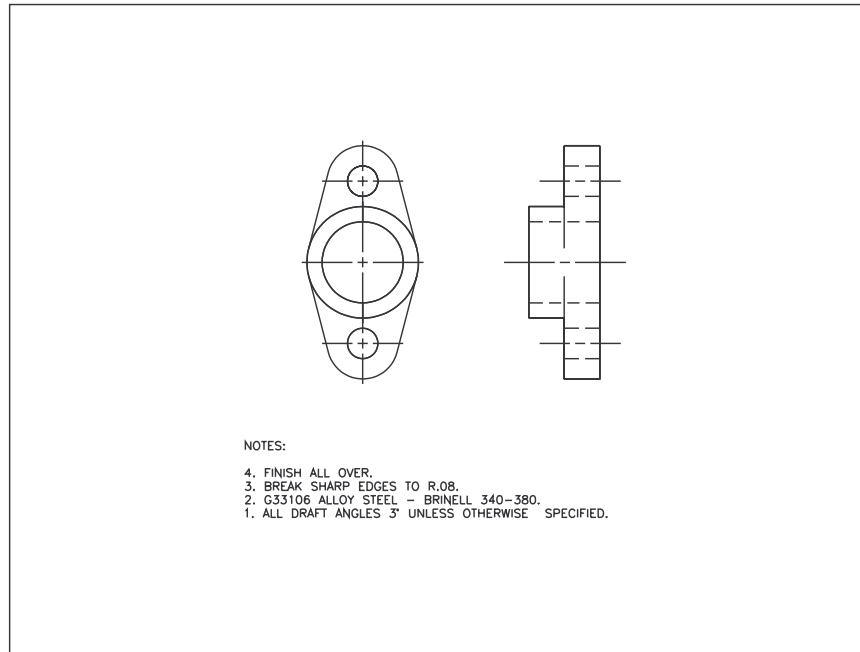


CHAPTER 19 EXERCISES

1. Packing Gland

Open the drawing entitled **CH18EX4-M** from the Chapter 18 Exercises. Activate a layout. Using **Pagesetup**, ensure that the **Plot Device** and **Paper Size** are set correctly for the device you will use to print or plot. If no viewport exists in the layout, create a layer named **VIEWPORTS**, then use the **Vports** command to make one viewport on the new layer. Use the **Viewports** toolbar and select an appropriate viewport scale from the drop-down list to achieve a print similar to that shown in Figure ME19-1. **Saveas CH19EX1-M**.

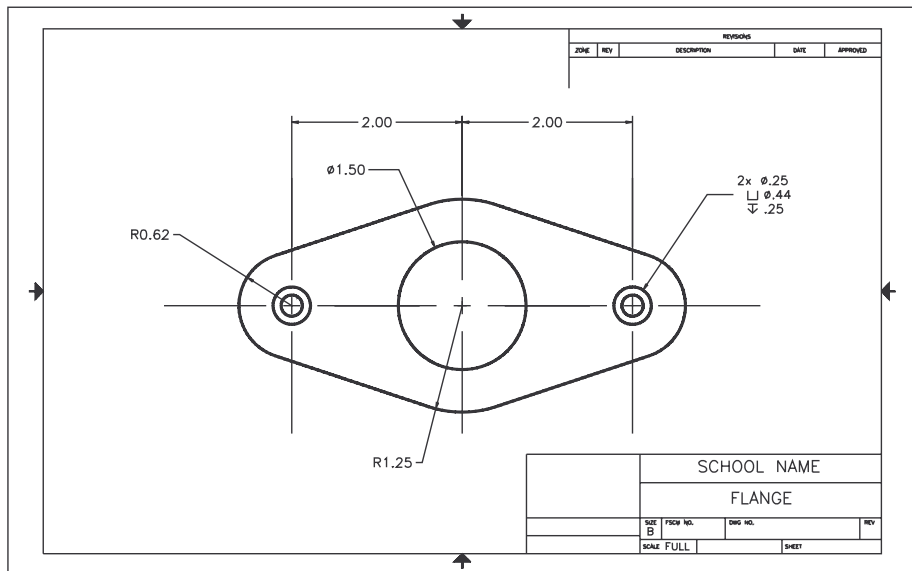
Figure ME19-1



2. Flange

Begin a **New** drawing and create the Flange using the dimensions shown in Figure ME19-2. Create the center lines on a separate layer but do not create the dimensions. Next, create a new layout using the **Layout** command with the **Template** option and select the **ANSI B -Color Dependent Plot Styles.dwt** with the **ANSI B Titleblock**. Switch to the new layout and set the viewport scale to **1.5** to achieve a drawing similar to that shown in Figure ME19-2. **Save** the drawing and assign the name **CH19EX2-M**.

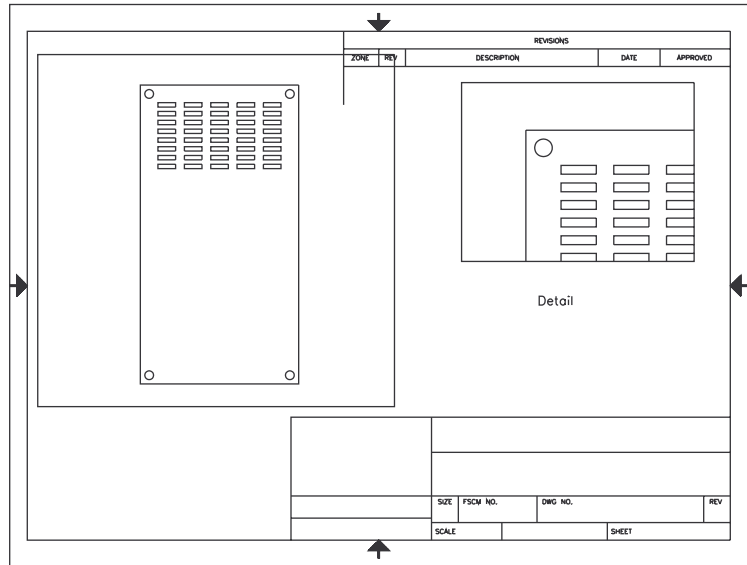
Figure ME19-2



3. Multiple Viewports

Open the drawing you created in Chapter 10 Exercises named **VENTPNL**. Create a new layout using the *Layout* command with the *Template* option and select the **ANSI A –Color Dependent Plot Styles.dwt** with the **ANSI A Titleblock**. Activate the new layout and *Erase* the viewport that exists (it is the same size and shape as the inside border of the titleblock). Create two viewports as shown in Figure ME19-3. Set the viewport scale for the main view at **1:2** and for the detail at **1:1**. Label the two views and indicate the scale with *Text*. *Save* the drawing as **CH19EX3-M**.

Figure ME19-3



4. Multiple Layouts

Open the Flange drawing you created previously named **CH19EX2-M**. Create a second new layout using the **ANSI A –Color Dependent Plot Styles.dwt**. Switch to the new layout and set the viewport scale to **.75**. Next, use the *Layer Properties Manager* to freeze the center line layer in the *Active Viewport Freeze* column (make sure your cursor is “inside” the viewport before you change the layer setting). Check the other (ANSI B) layout to verify the layer setting affected only the viewport in the ANSI A layout. Your new layout should look similar to that shown in Figure ME19-4. *Save* the drawing and assign the name **CH19EX4-M**.

Figure ME19-4

