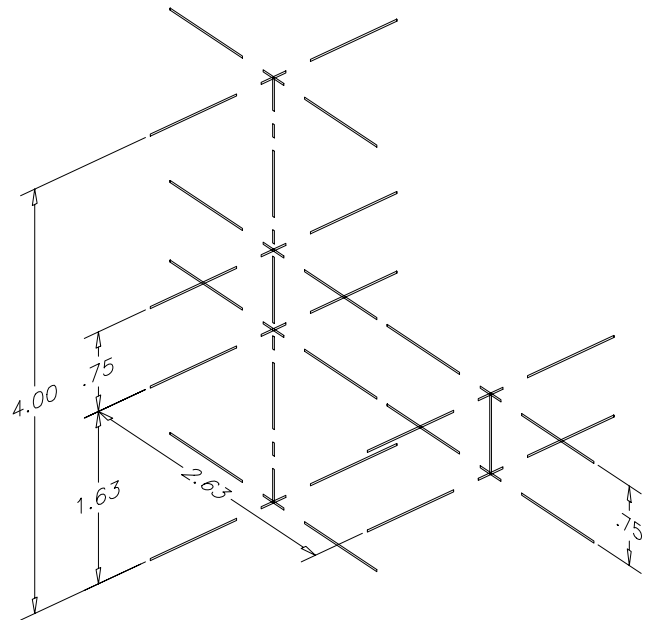


CHAPTER 37 EXERCISES

1. Centerlines

Create a three-dimensional drawing of the centerlines shown in Figure ME37-1. These are the centerlines of a shaft support that you will draw in another exercise. Create this drawing with *Lines* on the centerline layer using X, Y, and Z (absolute) coordinates. Do not include dimensions in your drawing. Display the drawing from a three-dimension viewpoint using any method. *Save* the drawing as CH37EX1-M.

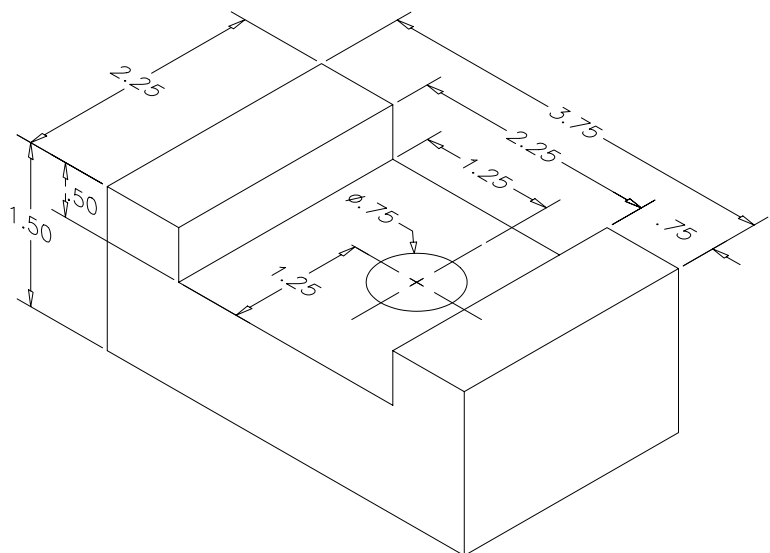
Figure ME37-1



2. Slide Block

Complete a three-dimensional wireframe drawing of the slide block shown in Figure ME37-2. *Save* the drawing as CH37EX2-M.

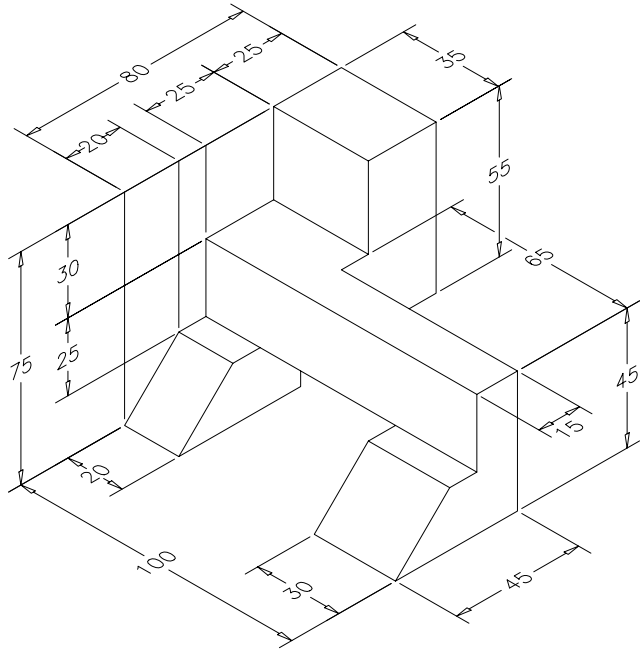
Figure ME37-2



3. Positioning Block

Complete a three-dimensional wireframe drawing of the positioning block shown in Figure ME37-3. Save the drawing as CH37EX3-M.

Figure ME37-3



4. Support Block

Complete a three-dimensional wireframe drawing of the support block shown in Figure ME37-4. Save the drawing as CH37EX4-M.

Figure ME37-4

