

CHAPTER 31 EXERCISES

1. Copylink, Pasteclip

Open the CH22EX1-M drawing from the Chapter 22 exercises. Use *Copylink* to copy the entire drawing to the Windows clipboard. Start WordPad and type the following sentence: "Identify each type of bolt in the following figure below." Use *Pasteclip* to insert the contents of the clipboard into WordPad. Save the WordPad file as CH31EX1-M.DOC.

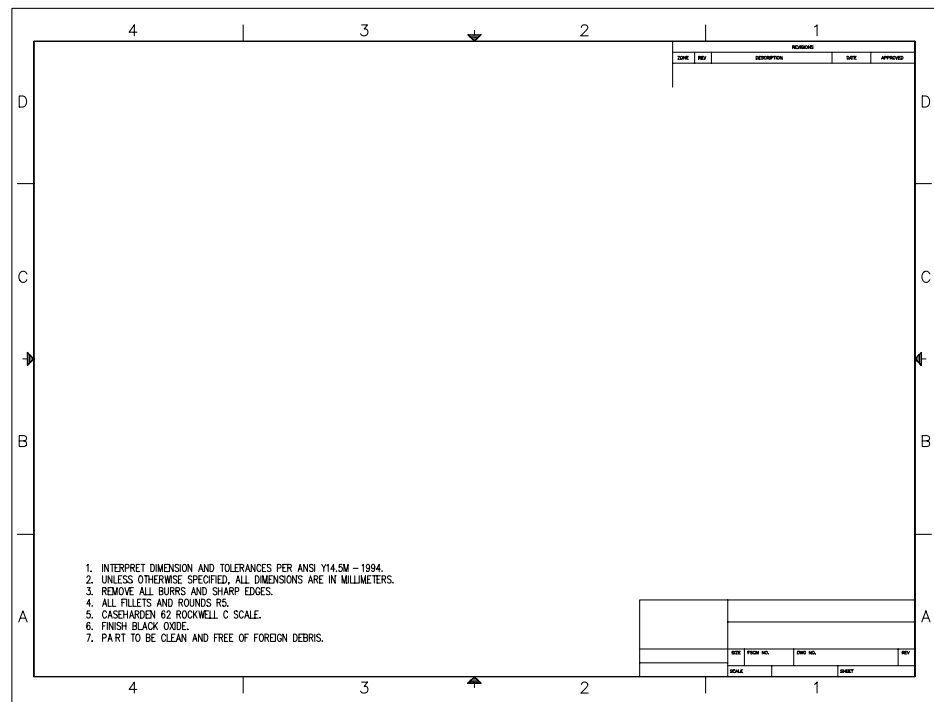
2. Copyclip, Pasteclip

In this exercise you will create a cover sheet and insert general notes onto the sheet. Begin a *New* drawing and set *Limits* for a "C-Size" sheet. Create or *Insert* a border and titleblock. While AutoCAD is running, start WordPad and type the paragraph of notes as shown below.

1. INTERPRET DIMENSIONS AND TOLERANCES PER ANSI Y14.5M-1994.
2. UNLESS OTHERWISE SPECIFIED, ALL DIMENSIONS ARE IN MILLIMETERS.
3. REMOVE ALL BURRS AND SHARP EDGES.
4. ALL FILLETS AND ROUNDS R5.
5. CASE HARDEN 62 ROCKWELL C SCALE.
6. FINISH BLACK OXIDE.
7. PART TO BE CLEAN AND FREE OF FOREIGN DEBRIS.

Next, select all of the text and use the *Copy* command (*Copy* from the *Edit* pull-down menu) to copy the text from WordPad to the clipboard. Return to the new AutoCAD drawing and use *Pasteclip* to insert the text as shown in Figure ME31-1. You may need to resize the text box to generate appropriately sized text. Save the drawing as CH31EX2-M.

Figure ME31-1



3. Editing an Embedded Object

Open the CH31EX2-M drawing from the previous exercise. Double-click on the text block to open the text back in the original WordPad program. Change the size of the fonts and make all of the text bold. *Exit* WordPad. Note that the changes are automatically updated in AutoCAD. *SaveAs* CH31EX3-M.

4. Copyclip, Pasteorig

Open drawing CH28EX2-M from the Chapter 28 exercises. Use *Copyclip* and select all objects to copy to the Windows clipboard. While this drawing is open, begin a *New* drawing. Use *Pasteorig* to paste the objects into the new drawing. Use *Saveas* and assign the name CH31EX4-M to the new drawing.

If you compare the two open drawings (use the *Window* pull-down menu or press Ctrl+Alt), you may notice that the dimensions appear differently since the new drawing does not have a previously created dimension style or appropriate dimension variable settings. To remedy this you can perform one of the following actions:

- A. Use DesignCenter to drag and drop the dimensions style from the CH28EX2-M drawing into the CH31EX4-M drawing, make the new dimension style current, then *Update* the existing dimensions.
- B. Create a new dimension style with the appropriate settings, then *Update* the existing dimensions.

When you are satisfied that the two drawings look the same, *Erase* the diameter dimensions in the CH31EX4-M drawing and replace them with labels A, B, and C as shown in Figure ME31-2.

Next, while AutoCAD is running, open Word and construct the following table:

Hole Letter	Number of Holes	Hole Diameter	Hole Depth
A	4	.25	Thru
B	2	.75	Thru
C	1	1.0	Thru

When finished, use *Copy* from the *Edit* pull-down menu (in Word) to copy the table to the Windows clipboard. Go to your AutoCAD drawing and use *Paste* to bring the table into the CH31EX4-M drawing. Highlight the table and reposition and resize the table appropriately. (Alternately, right-click on the highlighted table and select *Properties...* from the menu to produce the *OLE Properties* dialog box. Experiment with the *Size* and *Scale* to achieve the desired arrangement.) In the *OLE Properties* dialog box, set the *Plot Quality* to *Line Art* to achieve a high quality print. *Save* the drawing and make a print.

Figure ME31-2

