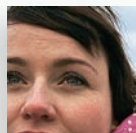


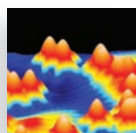
Table of Contents

Index of Exercise Physiology xiv
Preface xv
Guided Tour Through a Chapter xvi
Updates and Additions xx
Teaching and Learning Supplements xxii
Acknowledgments xxv



CHAPTER 1 *Homeostasis: A Framework for Human Physiology* 1

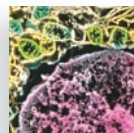
1.1 The Scope of Human Physiology 2
1.2 How Is the Body Organized? 2
 Muscle Cells and Tissue 3
 Neurons and Nervous Tissue 3
 Epithelial Cells and Epithelial Tissue 3
 Connective-Tissue Cells and Connective Tissue 4
 Organs and Organ Systems 4
1.3 Body Fluid Compartments 5
1.4 Homeostasis: A Defining Feature of Physiology 6
1.5 General Characteristics of Homeostatic Control Systems 7
 Feedback Systems 8
 Resetting of Set Points 9
 Feedforward Regulation 10
1.6 Components of Homeostatic Control Systems 10
 Reflexes 10
 Local Homeostatic Responses 12
1.7 Intercellular Chemical Messengers 12
1.8 Processes Related to Homeostasis 13
 Adaptation and Acclimatization 13
 Biological Rhythms 13
 Balance in the Homeostasis of Chemical Substances in the Body 14
Chapter 1 Clinical Case Study 16
 TEST QUESTIONS 18
 QUANTITATIVE AND THOUGHT QUESTIONS 19
 ANSWERS TO PHYSIOLOGICAL INQUIRIES 19



CHAPTER 2 *Chemical Composition of the Body* 20

2.1 Atoms 21
 Components of Atoms 21
 Atomic Number 22

Atomic Weight 22
 Ions 22
 Atomic Composition of the Body 23
2.2 Molecules 23
 Covalent Chemical Bonds 23
 Hydrogen Bonds 25
 Molecular Shape 25
 Ionic Molecules 25
 Free Radicals 26
2.3 Solutions 26
 Water 26
 Molecular Solubility 27
 Concentration 27
 Hydrogen Ions and Acidity 28
2.4 Classes of Organic Molecules 29
 Carbohydrates 29
 Lipids 31
 Proteins 32
 Nucleic Acids 38
 ATP 39
Chapter 2 Clinical Case Study 40
 TEST QUESTIONS 43
 ANSWERS TO PHYSIOLOGICAL INQUIRIES 43



CHAPTER 3 *Cellular Structure, Proteins, and Metabolism* 44

SECTION A *Cell Structure*
3A.1 Microscopic Observations of Cells 45
3A.2 Membranes 46
 Membrane Structure 47
 Membrane Junctions 49
3A.3 Cell Organelles 50
 Nucleus 50
 Ribosomes 50
 Endoplasmic Reticulum 52
 Golgi Apparatus 52
 Endosomes 52
 Mitochondria 52
 Lysosomes 54
 Peroxisomes 54
 Vaults 55
 Cytoskeleton 55

SECTION B

Proteins

- 3B.1 Genetic Code 57
- 3B.2 Protein Synthesis 58
Transcription: mRNA Synthesis 58
Translation: Polypeptide Synthesis 59
Regulation of Protein Synthesis 62
Mutation 63
- 3B.3 Protein Degradation 64
- 3B.4 Protein Secretion 64

SECTION C

Protein-Binding Sites

- 3C.1 Binding Site Characteristics 66
Chemical Specificity 67
Affinity 68
Saturation 68
Competition 69
- 3C.2 Regulation of Binding Site Characteristics 69
Allosteric Modulation 70
Covalent Modulation 70

SECTION D

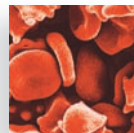
Enzymes and Chemical Energy

- 3D.1 Chemical Reactions 72
Determinants of Reaction Rates 72
Reversible and Irreversible Reactions 73
Law of Mass Action 73
- 3D.2 Enzymes 74
Cofactors 74
- 3D.3 Regulation of Enzyme-Mediated Reactions 75
Substrate Concentration 75
Enzyme Concentration 75
Enzyme Activity 76
- 3D.4 Multienzyme Reactions 76

SECTION E

Metabolic Pathways

- 3E.1 Cellular Energy Transfer 79
Glycolysis 79
Krebs Cycle 80
Oxidative Phosphorylation 82
- 3E.2 Carbohydrate, Fat, and Protein Metabolism 83
Carbohydrate Metabolism 84
Fat Metabolism 86
Protein and Amino Acid Metabolism 88
Metabolism Summary 89
- 3E.3 Essential Nutrients 89
Vitamins 90
- Chapter 3 Clinical Case Study 91
 TEST QUESTIONS 93
 QUANTITATIVE AND THOUGHT QUESTIONS 93
 ANSWERS TO PHYSIOLOGICAL INQUIRIES 94

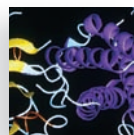


4

CHAPTER

Movement of Molecules Across Cell Membranes 95

- 4.1 Diffusion 96
Magnitude and Direction of Diffusion 96
Diffusion Rate Versus Distance 97
Diffusion Through Membranes 97
- 4.2 Mediated-Transport Systems 100
Facilitated Diffusion 101
Active Transport 102
- 4.3 Osmosis 105
Extracellular Osmolarity and Cell Volume 108
- 4.4 Endocytosis and Exocytosis 109
Endocytosis 109
Exocytosis 112
- 4.5 Epithelial Transport 112
- Chapter 4 Clinical Case Study 114
 TEST QUESTIONS 116
 QUANTITATIVE AND THOUGHT QUESTIONS 117
 ANSWERS TO PHYSIOLOGICAL INQUIRIES 117

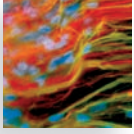


5

CHAPTER

Control of Cells by Chemical Messengers 118

- 5.1 Receptors 119
Regulation of Receptors 121
- 5.2 Signal Transduction Pathways 121
Pathways Initiated by Lipid-Soluble Messengers 122
Pathways Initiated by Water-Soluble Messengers 122
Plasma Membrane Receptors and Gene Transcription 130
Cessation of Activity in Signal Transduction Pathways 131
- Chapter 5 Clinical Case Study 132
 TEST QUESTIONS 134
 QUANTITATIVE AND THOUGHT QUESTIONS 134
 ANSWERS TO PHYSIOLOGICAL INQUIRIES 134



CHAPTER

6

Neuronal Signaling and the Structure of the Nervous System 135

SECTION A

Neural Tissue

- 6A.1 Structure and Maintenance of Neurons 136
- 6A.2 Functional Classes of Neurons 137
- 6A.3 Glial Cells 139
- 6A.4 Neural Growth and Regeneration 140

SECTION B

Membrane Potentials

- 6B.1 Basic Principles of Electricity 142
- 6B.2 The Resting Membrane Potential 142
- 6B.3 Graded Potentials and Action Potentials 147
 - Graded Potentials 147*
 - Action Potentials 149*

SECTION C

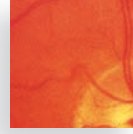
Synapses

- 6C.1 Functional Anatomy of Synapses 157
- 6C.2 Mechanisms of Neurotransmitter Release 158
- 6C.3 Activation of the Postsynaptic Cell 158
 - Excitatory Chemical Synapses 159*
 - Inhibitory Chemical Synapses 159*
- 6C.4 Synaptic Integration 159
- 6C.5 Synaptic Strength 161
 - Modification of Synaptic Transmission by Drugs and Disease 162*
- 6C.6 Neurotransmitters and Neuromodulators 163
 - Acetylcholine 163*
 - Biogenic Amines 164*
 - Amino Acid Neurotransmitters 166*
 - Neuropeptides 167*
 - Gases 168*
 - Purines 168*
- 6C.7 Neuroeffector Communication 168

SECTION D

Structure of the Nervous System

- 6D.1 Central Nervous System: Brain 170
 - Forebrain 170*
 - Cerebellum 172*
 - Brainstem 172*
- 6D.2 Central Nervous System: Spinal Cord 173
- 6D.3 Peripheral Nervous System 173
- 6D.4 Autonomic Nervous System 175
- 6D.5 Blood Supply, Blood–Brain Barrier, and Cerebrospinal Fluid 180
- Chapter 6 Clinical Case Study 182
 - TEST QUESTIONS 184
 - QUANTITATIVE AND THOUGHT QUESTIONS 185
 - ANSWERS TO PHYSIOLOGICAL INQUIRIES 185



CHAPTER

7

Sensory Physiology 186

SECTION A

General Principles

- 7A.1 Sensory Receptors 187
 - The Receptor Potential 188*
- 7A.2 Primary Sensory Coding 189
 - Stimulus Type 189*
 - Stimulus Intensity 190*
 - Stimulus Location 190*
 - Central Control of Afferent Information 193*
- 7A.3 Ascending Neural Pathways in Sensory Systems 193
- 7A.4 Association Cortex and Perceptual Processing 194
 - Factors That Affect Perception 195*

SECTION B

Specific Sensory Systems

- 7B.1 Somatic Sensation 197
 - Touch and Pressure 197*
 - Sense of Posture and Movement 197*
 - Temperature 197*
 - Pain 198*
 - Neural Pathways of the Somatosensory System 200*
- 7B.2 Vision 202
 - Light 202*
 - Overview of Eye Anatomy 203*
 - The Optics of Vision 203*
 - Photoreceptor Cells and Phototransduction 206*
 - Neural Pathways of Vision 208*
 - Color Vision 209*
 - Color Blindness 211*
 - Eye Movement 211*
- 7B.3 Hearing 212
 - Sound 212*
 - Sound Transmission in the Ear 213*
 - Hair Cells of the Organ of Corti 215*
 - Neural Pathways in Hearing 216*
- 7B.4 Vestibular System 218
 - The Semicircular Canals 218*
 - The Utricle and Sacculle 219*
 - Vestibular Information and Pathways 219*
- 7B.5 Chemical Senses 220
 - Taste 220*
 - Smell 221*

Chapter 7 Clinical Case Study 223

TEST QUESTIONS 226

QUANTITATIVE AND THOUGHT QUESTIONS 227

ANSWERS TO PHYSIOLOGICAL INQUIRIES 227

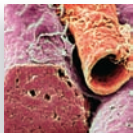


8

CHAPTER

Consciousness, the Brain, and Behavior 228

- 8.1 States of Consciousness 229
 - Electroencephalogram* 229
 - The Waking State* 230
 - Sleep* 230
 - Neural Substrates of States of Consciousness* 231
 - Coma and Brain Death* 233
- 8.2 Conscious Experiences 234
 - Selective Attention* 234
 - Neural Mechanisms of Conscious Experiences* 235
- 8.3 Motivation and Emotion 236
 - Motivation* 236
 - Emotion* 237
- 8.4 Altered States of Consciousness 238
 - Schizophrenia* 239
 - The Mood Disorders: Depressions and Bipolar Disorders* 239
 - Psychoactive Substances, Dependence, and Tolerance* 240
- 8.5 Learning and Memory 241
 - Memory* 242
 - The Neural Basis of Learning and Memory* 242
- 8.6 Cerebral Dominance and Language 243
- Chapter 8 Clinical Case Study 246
 - TEST QUESTIONS 248
 - QUANTITATIVE AND THOUGHT QUESTIONS 248
 - ANSWERS TO PHYSIOLOGICAL INQUIRIES 249



9

CHAPTER

Muscle 250

- SECTION A** *Skeletal Muscle*
- 9A.1 Structure 251
- 9A.2 Molecular Mechanisms of Skeletal Muscle Contraction 254
 - Sliding-Filament Mechanism* 254
 - Roles of Troponin, Tropomyosin, and Ca²⁺ in Contraction* 257
 - Excitation–Contraction Coupling* 257
 - Membrane Excitation: The Neuromuscular Junction* 259
- 9A.3 Mechanics of Single-Fiber Contraction 263
 - Twitch Contractions* 263
 - Load–Velocity Relation* 265
 - Frequency–Tension Relation* 265
 - Length–Tension Relation* 266

- 9A.4 Skeletal Muscle Energy Metabolism 267
 - Muscle Fatigue* 268
- 9A.5 Types of Skeletal Muscle Fibers 269
- 9A.6 Whole-Muscle Contraction 271
 - Control of Muscle Tension* 272
 - Control of Shortening Velocity* 272
 - Muscle Adaptation to Exercise* 273
 - Lever Action of Muscles and Bones* 274
- 9A.7 Skeletal Muscle Disorders 275
 - Muscle Cramps* 275
 - Hypocalcemic Tetany* 276
 - Muscular Dystrophy* 276
 - Myasthenia Gravis* 276

SECTION B

Smooth and Cardiac Muscle

- 9B.1 Structure of Smooth Muscle 279
- 9B.2 Smooth Muscle Contraction and Its Control 280
 - Cross-Bridge Activation* 280
 - Sources of Cytosolic Ca²⁺* 281
 - Membrane Activation* 282
 - Types of Smooth Muscle* 284
- 9B.3 Cardiac Muscle 285
 - Cellular Structure of Cardiac Muscle* 285
 - Excitation–Contraction Coupling in Cardiac Muscle* 285
- Chapter 9 Clinical Case Study 288
 - TEST QUESTIONS 289
 - QUANTITATIVE AND THOUGHT QUESTIONS 290
 - ANSWERS TO PHYSIOLOGICAL INQUIRIES 291

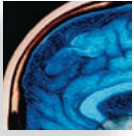


10

CHAPTER

Control of Body Movement 292

- 10.1 Motor Control Hierarchy 293
 - Voluntary and Involuntary Actions* 294
- 10.2 Local Control of Motor Neurons 295
 - Interneurons* 295
 - Local Afferent Input* 296
- 10.3 The Brain Motor Centers and the Descending Pathways They Control 300
 - Cerebral Cortex* 300
 - Subcortical and Brainstem Nuclei* 300
 - Cerebellum* 302
 - Descending Pathways* 303
- 10.4 Muscle Tone 304
 - Abnormal Muscle Tone* 304
- 10.5 Maintenance of Upright Posture and Balance 305
- 10.6 Walking 306
- Chapter 10 Clinical Case Study 307
 - TEST QUESTIONS 309
 - QUANTITATIVE AND THOUGHT QUESTIONS 309
 - ANSWERS TO PHYSIOLOGICAL INQUIRIES 310



CHAPTER

11

The Endocrine System 311

SECTION A

Principles of Hormonal Control Systems

- 11A.1 Hormone Structures and Synthesis 312
Amine Hormones 312
Peptide and Protein Hormones 313
Steroid Hormones 315
- 11A.2 Hormone Transport in the Blood 318
- 11A.3 Hormone Metabolism and Excretion 319
- 11A.4 Mechanisms of Hormone Action 319
Hormone Receptors 319
Events Elicited by Hormone–Receptor Binding 320
Pharmacological Effects of Hormones 321
- 11A.5 Inputs That Control Hormone Secretion 321
Control by Plasma Concentrations of Mineral Ions or Organic Nutrients 321
Control by Neurons 321
Control by Other Hormones 322
- 11A.6 Types of Endocrine Disorders 322
Hyposecretion 323
Hypersecretion 323
Hyporesponsiveness and Hyperresponsiveness 323

SECTION B

The Hypothalamus and Pituitary Gland

- 11B.1 Control Systems Involving the Hypothalamus and Pituitary Gland 325
Posterior Pituitary Gland Hormones 325
Anterior Pituitary Gland Hormones and the Hypothalamus 326

SECTION C

The Thyroid Gland

- 11C.1 Synthesis of Thyroid Hormones 332
- 11C.2 Control of Thyroid Function 332
- 11C.3 Actions of Thyroid Hormones 333
Metabolic Actions 333
Permissive Actions 334
Growth and Development 334
- 11C.4 Hypothyroidism and Hyperthyroidism 334

SECTION D

The Endocrine Response to Stress

- 11D.1 Physiological Functions of Cortisol 336
- 11D.2 Functions of Cortisol in Stress 337
- 11D.3 Adrenal Insufficiency and Cushing's Syndrome 337
- 11D.4 Other Hormones Released During Stress 339
- 11D.5 Psychological Stress and Disease 339

SECTION E

Endocrine Control of Growth

- 11E.1 Bone Growth 340
- 11E.2 Environmental Factors Influencing Growth 341

- 11E.3 Hormonal Influences on Growth 341
Growth Hormone and Insulin-Like Growth Factors 341
Thyroid Hormones 343
Insulin 343
Sex Hormones 343
Cortisol 344

SECTION F

Endocrine Control of Ca²⁺ Homeostasis

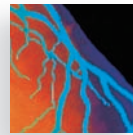
- 11F.1 Effector Sites for Ca²⁺ Homeostasis 345
Bone 345
Kidneys 346
Gastrointestinal Tract 346
- 11F.2 Hormonal Controls 346
Parathyroid Hormone 346
1,25-Dihydroxyvitamin D 346
Calcitonin 347
- 11F.3 Metabolic Bone Diseases 348
Hypercalcemia 348
Hypocalcemia 348

Chapter 11 Clinical Case Study 349

TEST QUESTIONS 351

QUANTITATIVE AND THOUGHT QUESTIONS 352

ANSWERS TO PHYSIOLOGICAL INQUIRIES 352



CHAPTER

12

Cardiovascular Physiology 353

SECTION A

Overall Design of the Circulatory System

- 12A.1 System Overview 354
- 12A.2 Pressure, Flow, and Resistance 356

SECTION B

The Heart

- 12B.1 Anatomy 359
Cardiac Muscle 360
- 12B.2 Heartbeat Coordination 361
Sequence of Excitation 361
Cardiac Action Potentials and Excitation of the SA Node 363
The Electrocardiogram 364
Excitation–Contraction Coupling 366
Refractory Period of the Heart 367
- 12B.3 Mechanical Events of the Cardiac Cycle 367
Mid-Diastole to Late Diastole 367
Systole 368
Early Diastole 370
Pulmonary Circulation Pressures 370
Heart Sounds 371
- 12B.4 The Cardiac Output 371
Control of Heart Rate 372
Control of Stroke Volume 372
- 12B.5 Measurement of Cardiac Function 375

SECTION C *The Vascular System*

- 12C.1 Arteries 377
 - Arterial Blood Pressure* 377
 - Measurement of Systemic Arterial Pressure* 380
- 12C.2 Arterioles 381
 - Local Controls* 382
 - Extrinsic Controls* 383
 - Endothelial Cells and Vascular Smooth Muscle* 384
 - Arteriolar Control in Specific Organs* 385
- 12C.3 Capillaries 385
 - Anatomy of the Capillary Network* 385
 - Velocity of Capillary Blood Flow* 387
 - Diffusion Across the Capillary Wall: Exchanges of Nutrients and Metabolic End Products* 388
 - Bulk Flow Across the Capillary Wall: Distribution of the Extracellular Fluid* 389
- 12C.4 Veins 392
 - Determinants of Venous Pressure* 392
- 12C.5 The Lymphatic System 394
 - Mechanism of Lymph Flow* 395

SECTION D *Integration of Cardiovascular Function: Regulation of Systemic Arterial Pressure*

- 12D.1 Baroreceptor Reflexes 400
 - Arterial Baroreceptors* 400
 - The Medullary Cardiovascular Center* 401
 - Operation of the Arterial Baroreceptor Reflex* 402
 - Other Baroreceptors* 402
- 12D.2 Blood Volume and Long-Term Regulation of Arterial Pressure 403
- 12D.3 Other Cardiovascular Reflexes and Responses 403

SECTION E *Cardiovascular Patterns in Health and Disease*

- 12E.1 Hemorrhage and Other Causes of Hypotension 405
 - Shock* 406
- 12E.2 The Upright Posture 406
- 12E.3 Exercise 407
 - Maximal Oxygen Consumption and Training* 409
- 12E.4 Hypertension 410
- 12E.5 Heart Failure 412
- 12E.6 Hypertrophic Cardiomyopathy 413
- 12E.7 Coronary Artery Disease and Heart Attacks 413

SECTION F *Blood and Hemostasis*

- 12F.1 Plasma 417
- 12F.2 The Blood Cells 417
 - Erythrocytes* 417
 - Leukocytes* 420
 - Platelets* 421
 - Regulation of Blood Cell Production* 421
- 12F.3 Hemostasis: The Prevention of Blood Loss 422
 - Formation of a Platelet Plug* 422

Blood Coagulation: Clot Formation 423

Anticlotting Systems 425

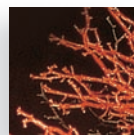
Anticlotting Drugs 427

Chapter 12 Clinical Case Study 428

TEST QUESTIONS 430

QUANTITATIVE AND THOUGHT QUESTIONS 431

ANSWERS TO PHYSIOLOGICAL INQUIRIES 431



13

CHAPTER

Respiratory Physiology 434

13.1 Organization of the Respiratory System 435

The Airways and Blood Vessels 435

Site of Gas Exchange: The Alveoli 437

Relation of the Lungs to the Thoracic (Chest) Wall 437

13.2 Ventilation and Lung Mechanics 438

How Is a Stable Balance Achieved Between Breaths? 439

Inspiration 441

Expiration 441

Lung Compliance 443

Airway Resistance 445

Lung Volumes and Capacities 446

Alveolar Ventilation 446

13.3 Exchange of Gases in Alveoli and Tissues 448

Partial Pressures of Gases 449

Alveolar Gas Pressures 451

Gas Exchange Between Alveoli and Blood 452

Matching of Ventilation and Blood Flow in Alveoli 453

Gas Exchange Between Tissues and Blood 453

13.4 Transport of Oxygen in Blood 454

What Is the Effect of P_{O_2} on Hemoglobin Saturation? 455

Effects of Blood P_{CO_2} , H^+ Concentration, Temperature, and DPG Concentration on Hemoglobin

Saturation 457

13.5 Transport of Carbon Dioxide in Blood 458

13.6 Transport of Hydrogen Ion Between Tissues and Lungs 459

13.7 Control of Respiration 460

Neural Generation of Rhythmic Breathing 460

Control of Ventilation by P_{O_2} , P_{CO_2} , and H^+ Concentration 461

Control of Ventilation During Exercise 464

Other Ventilatory Responses 465

13.8 Hypoxia 466

Why Do Ventilation–Perfusion Abnormalities

Affect O_2 More Than CO_2 ? 467

Emphysema 467

Acclimatization to High Altitude 468

13.9 Nonrespiratory Functions of the Lungs 468

Chapter 13 Clinical Case Study 469

TEST QUESTIONS 473

QUANTITATIVE AND THOUGHT QUESTIONS 474

ANSWERS TO PHYSIOLOGICAL INQUIRIES 474



14

CHAPTER

The Kidneys and Regulation of Water and Inorganic Ions 475

SECTION A Basic Principles of Renal Physiology

- 14A.1 Renal Functions 476
- 14A.2 Structure of the Kidneys and Urinary System 477
- 14A.3 Basic Renal Processes 480
 - Glomerular Filtration* 482
 - Tubular Reabsorption* 484
 - Tubular Secretion* 486
 - Metabolism by the Tubules* 486
 - Regulation of Membrane Channels and Transporters* 486
 - “Division of Labor” in the Tubules* 486
- 14A.4 The Concept of Renal Clearance 486
- 14A.5 Micturition 487
 - Incontinence* 488

SECTION B Regulation of Ion and Water Balance

- 14B.1 Total-Body Balance of Sodium and Water 490
- 14B.2 Basic Renal Processes for Sodium and Water 490
 - Primary Active Na⁺ Reabsorption* 490
 - Coupling of Water Reabsorption to Na⁺ Reabsorption* 491
 - Urine Concentration: The Countercurrent Multiplier System* 492
- 14B.3 Renal Sodium Regulation 495
 - Control of GFR* 496
 - Control of Na⁺ Reabsorption* 497
- 14B.4 Renal Water Regulation 499
 - Osmoreceptor Control of Vasopressin Secretion* 499
 - Baroreceptor Control of Vasopressin Secretion* 500
- 14B.5 A Summary Example: The Response to Sweating 501
- 14B.6 Thirst and Salt Appetite 501
- 14B.7 Potassium Regulation 502
 - Renal Regulation of K⁺* 502
- 14B.8 Renal Regulation of Calcium and Phosphate Ion 503
- 14B.9 Summary—Division of Labor 504
- 14B.10 Diuretics 504

SECTION C Hydrogen Ion Regulation

- 14C.1 Sources of Hydrogen Ion Gain or Loss 507
- 14C.2 Buffering of Hydrogen Ion in the Body 507
- 14C.3 Integration of Homeostatic Controls 507
- 14C.4 Renal Mechanisms 508
 - HCO₃⁻ Handling* 508
 - Addition of New HCO₃⁻ to the Plasma* 509
 - Renal Responses to Acidosis and Alkalosis* 510
- 14C.5 Classification of Acidosis and Alkalosis 510

Table of Contents

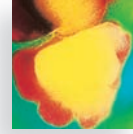
Chapter 14 Clinical Case Study 512

Hemodialysis, Peritoneal Dialysis, and Transplantation 513

TEST QUESTIONS 514

QUANTITATIVE AND THOUGHT QUESTIONS 515

ANSWERS TO PHYSIOLOGICAL INQUIRIES 515



15

CHAPTER

The Digestion and Absorption of Food 516

- 15.1 Overview: Functions of the Gastrointestinal Organs 517
- 15.2 Structure of the Gastrointestinal Tract Wall 521
- 15.3 Digestion and Absorption 523
 - Carbohydrate* 523
 - Protein* 524
 - Fat* 524
 - Vitamins* 527
 - Water and Minerals* 527
- 15.4 How Are Gastrointestinal Processes Regulated? 528
 - Basic Principles* 528
 - Mouth, Pharynx, and Esophagus* 531
 - Stomach* 533
 - Pancreatic Secretions* 538
 - Bile Secretion and Liver Function* 539
 - Small Intestine* 541
 - Large Intestine* 543
- 15.5 Pathophysiology of the Gastrointestinal Tract 544
 - Ulcers* 544
 - Vomiting* 546
 - Gallstones* 546
 - Lactose Intolerance* 547
 - Constipation and Diarrhea* 547

Chapter 15 Clinical Case Study 548

TEST QUESTIONS 552

QUANTITATIVE AND THOUGHT QUESTIONS 552

ANSWERS TO PHYSIOLOGICAL INQUIRIES 553



16

CHAPTER

Regulation of Organic Metabolism and Energy Balance 554

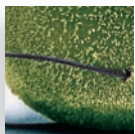
SECTION A Control and Integration of Carbohydrate, Protein, and Fat Metabolism

- 16A.1 Events of the Absorptive and Postabsorptive States 555
 - Absorptive State* 555
 - Postabsorptive State* 558

- 16A.2 Endocrine and Neural Control of the Absorptive and Postabsorptive States 560
Insulin 561
Glucagon 564
Epinephrine and Sympathetic Nerves to Liver and Adipose Tissue 564
Cortisol 565
Growth Hormone 565
Summary of Hormonal Controls 565
Hypoglycemia 566
- 16A.3 Energy Homeostasis in Exercise and Stress 566

SECTION B *Regulation of Total-Body Energy Balance and Temperature*

- 16B.1 Basic Concepts of Energy Expenditure 569
Metabolic Rate 569
- 16B.2 Regulation of Total-Body Energy Stores 570
Control of Food Intake 571
Overweight and Obesity 573
Eating Disorders: Anorexia Nervosa and Bulimia Nervosa 574
What Should We Eat? 574
- 16B.3 Regulation of Body Temperature 574
Mechanisms of Heat Loss or Gain 575
Temperature-Regulating Reflexes 576
Temperature Acclimatization 579
- 16B.4 Fever and Hyperthermia 579
- Chapter 16 Clinical Case Study 581
 TEST QUESTIONS 584
 QUANTITATIVE AND THOUGHT QUESTIONS 585
 ANSWERS TO PHYSIOLOGICAL INQUIRIES 585



CHAPTER

17

Reproduction 586

SECTION A *Overview of Terminology and General Principles*

SECTION B *Gametogenesis, Sex Determination, and Sex Differentiation*

- 17B.1 Gametogenesis 589
- 17B.2 Sex Determination 590
- 17B.3 Sex Differentiation 590
Differentiation of the Gonads 590
Differentiation of Internal and External Genitalia 591
- 17B.4 Sexual Differentiation of the Central Nervous System and Homosexuality 592

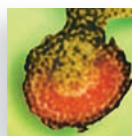
SECTION C *Male Reproductive Physiology*

- 17C.1 Anatomy 593
- 17C.2 Spermatogenesis 595
- 17C.3 Transport of Sperm 597
Erection 598
Ejaculation 598

- 17C.4 Hormonal Control of Male Reproductive Functions 599
Control of the Testes 599
Testosterone 600
- 17C.5 Puberty 600
Secondary Sex Characteristics and Growth 600
Behavior 600
- 17C.6 Hypogonadism 601
- 17C.7 Andropause 601

SECTION D *Female Reproductive Physiology*

- 17D.1 Anatomy 603
- 17D.2 Ovarian Functions 603
Oogenesis 604
Follicle Growth 605
Formation of the Corpus Luteum 606
Sites of Synthesis of Ovarian Hormones 606
- 17D.3 Control of Ovarian Function 606
Follicle Development and Estrogen Synthesis During the Early and Middle Follicular Phases 608
LH Surge and Ovulation 609
The Luteal Phase 610
- 17D.4 Uterine Changes in the Menstrual Cycle 611
- 17D.5 Other Effects of Estrogen and Progesterone 612
- 17D.6 Androgens in Women 613
- 17D.7 Puberty 613
- 17D.8 Female Sexual Response 614
- 17D.9 Pregnancy 614
Egg Transport 614
Intercourse, Sperm Transport, and Capacitation 614
Fertilization 615
Early Development, Implantation, and Placentation 616
Hormonal and Other Changes During Pregnancy 619
Parturition 621
Lactation 623
Contraception 625
Infertility 626
- 17D.10 Menopause 626
- Chapter 17 Clinical Case Study 627
 TEST QUESTIONS 630
 QUANTITATIVE AND THOUGHT QUESTIONS 631
 ANSWERS TO PHYSIOLOGICAL INQUIRIES 631



CHAPTER

18

The Immune System 632

- 18.1 Cells and Secretions Mediating Immune Defenses 633
Immune Cells 633
Cytokines 634
- 18.2 Innate Immune Responses 634
Defenses at Body Surfaces 634

<i>Inflammation</i>	634
<i>Interferons</i>	640
<i>Toll-Like Receptors</i>	640
18.3 Adaptive Immune Responses	641
<i>Overview</i>	641
<i>Lymphoid Organs and Lymphocyte Origins</i>	641
<i>Functions of B Cells and T Cells</i>	643
<i>Lymphocyte Receptors</i>	645
<i>Antigen Presentation to T Cells</i>	647
<i>NK Cells</i>	648
<i>Development of Immune Tolerance</i>	649
<i>Antibody-Mediated Immune Responses: Defenses Against Bacteria, Extracellular Viruses, and Toxins</i>	649
<i>Defenses Against Virus-Infected Cells and Cancer Cells</i>	653
18.4 Systemic Manifestations of Infection	655
18.5 Factors That Alter the Resistance to Infection	655
<i>Acquired Immune Deficiency Syndrome (AIDS)</i>	657
<i>Antibiotics</i>	658
18.6 Harmful Immune Responses	658
<i>Graft Rejection</i>	658
<i>Transfusion Reactions</i>	658
<i>Allergy (Hypersensitivity)</i>	660
<i>Autoimmune Disease</i>	661
<i>Excessive Inflammatory Responses</i>	661
Chapter 18 Clinical Case Study	664
TEST QUESTIONS	668
QUANTITATIVE AND THOUGHT QUESTIONS	669
ANSWERS TO PHYSIOLOGICAL INQUIRIES	669



CHAPTER 19

Medical Physiology: Integration Using Clinical Cases 670

C A S E 19-1 *A Woman with Palpitations and Heat Intolerance*

19-1.1 Case Presentation	671
19-1.2 Physical Examination	671
19-1.3 Laboratory Tests	672

19-1.4 Diagnosis	673
19-1.5 Physiological Integration	674
19-1.6 Therapy	675

C A S E 19-2 *A Man with Chest Pain After a Long Airplane Flight*

19-2.1 Case Presentation	675
19-2.2 Physical Examination	675
19-2.3 Laboratory Tests	675
19-2.4 Diagnosis	676
19-2.5 Physiological Integration	677
19-2.6 Therapy	678

C A S E 19-3 *A Man with Abdominal Pain, Fever, and Circulatory Failure*

19-3.1 Case Presentation	678
19-3.2 Physical Examination	678
19-3.3 Laboratory Tests	678
19-3.4 Diagnosis	679
19-3.5 Physiological Integration	680
19-3.6 Therapy	681

C A S E 19-4 *A College Student with Nausea, Flushing, and Sweating*

19-4.1 Case Presentation	682
19-4.2 Physical Examination	682
19-4.3 Laboratory Tests	683
19-4.4 Diagnosis	683
19-4.5 Physiological Integration	683
19-4.6 Therapy	685

APPENDIX A: Answers to Test & Quantitative and Thought Questions A-1

APPENDIX B: Index of Clinical Terms A-17

GLOSSARY G-1

REFERENCES R-1

CREDITS C-1

INDEX I-1