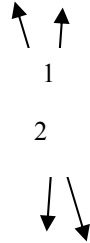


Lesson 10-2

Example 1 Identify Angles

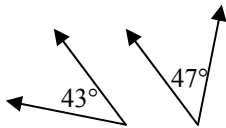
Identify the pair of angles as *complementary*, *supplementary*, or *neither*.



$\angle 1$ and $\angle 2$ form a straight angle. So, the angles are supplementary.

Example 2 Identify Angles

Identify the pair of angles as *complementary*, *supplementary*, or *neither*.



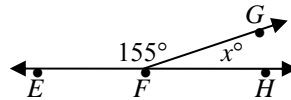
$$43^\circ + 47^\circ = 90^\circ$$

The angles are complementary.

Example 3 Find a Missing Angle Measure

ALGEBRA Find the value of x .

Since the two angles form a straight line, they are supplementary.



Words	The sum of the measures of $\angle EFG$ and $\angle GFH$ is 180° .
Variable	Let x represent the measure of $\angle GFH$.
Equation	$155 + x = 180$

$$\begin{array}{r} 155 + x = 180 \\ -155 \quad -155 \\ \hline x = 25 \end{array}$$

Write the equation.
Subtract 155 from each side.

So, the value of x is 25.