

Installing medisoft® Advanced Student At-Home Version 19

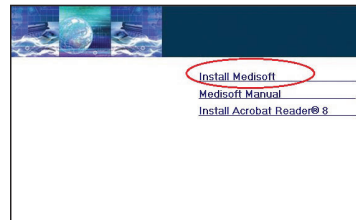
Close any open applications before installing Medisoft®. Look for McGraw-Hill Student At-Home Edition on the CD label to make sure you have the correct Medisoft® CD.

Begin by inserting the Medisoft® Version 19 CD in the local CD-ROM drive. The CD-ROM contains an autorun function that will automatically open the Medisoft installation window. If the installation window does not open automatically,

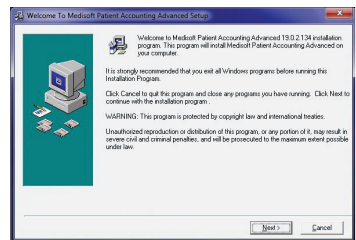
Windows 7 and 8 users: Click the Windows Start button and type **E:/autorun.exe** in the text box (where E is your CD-ROM drive) and press Enter.



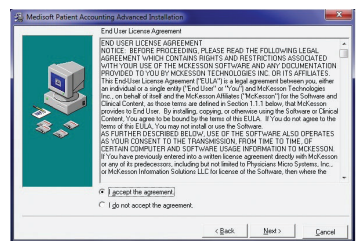
In the Medisoft installation window, click the [Install Medisoft](#) link.



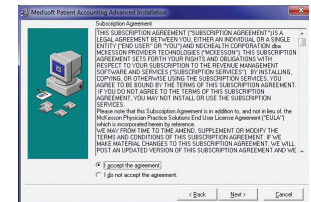
In the Welcome window, click [Next](#). The End User License Agreement appears.



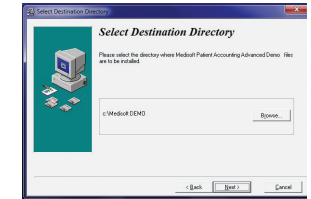
In the End User License Agreement window, click the [I accept the agreement](#) button. By accepting this agreement and following the installation instructions, you are granted the license. Then click [Next](#).



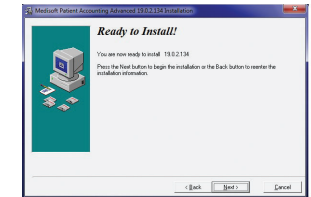
In the Subscription Agreement window, click the [I accept the agreement](#) button and then click [Next](#).



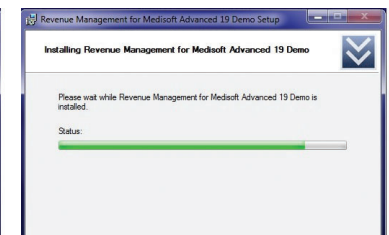
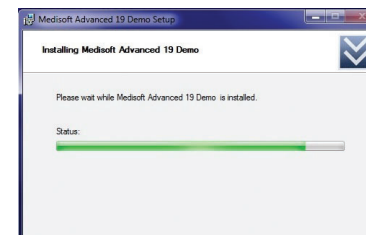
In the Select Destination Directory window, click [Next](#). Note: the default setting saves the Medisoft® program to the Program Files folder on your computer's C: drive. (If you are using Windows 7, it may default to the root drive, C:\ Medisoft DEMO).



You are now ready to begin the installation of the Medisoft® software. Click the [Next](#) button to begin the installation.



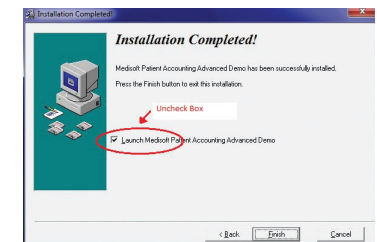
The Medisoft installation progress bar indicates the progress of the installation. During the installation process, Medisoft Patient Accounting and Revenue Management files will be installed.



The Installation Completed window appears.

Important: Uncheck the **Launch Medisoft Patient Accounting Advanced** box so that the program does not launch at this time. Click [Finish](#). The installation program closes.

Warning: Do not launch the program after installation. Proceed to the Student Data File installer steps. In order to complete assignments in the textbooks, you must install the Student Data File before you can proceed.

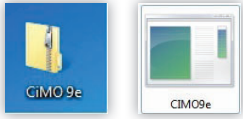


When the Medisoft installation application has closed, click the [Exit](#) link on the Medisoft installation window.

Downloading the Medisoft® Student Data Installer

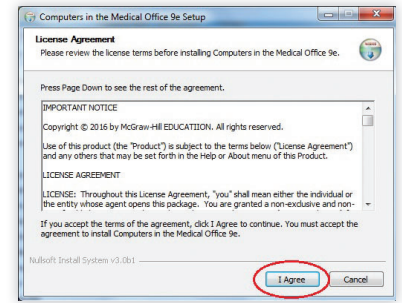
Go to www.mhhe.com/medisoft.

Click the file named [CiMO9e.zip](#) (the file name will be different if you are using another text besides *Computers in the Medical Office*) to download the file to your computer desktop.



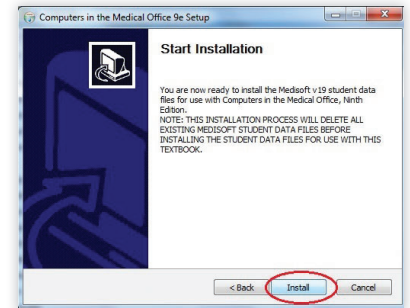
Double-click to open the CiMO9e.zip folder; a file called CiMO9e.exe appears. Double-click [CiMO9e.exe](#) to execute it.

The Student Data File Installation Wizard begins initializing and the McGraw-Hill End User License Agreement window opens. When you have read the license agreement and accept the terms, click the [I Agree](#) button.



You are now ready to begin installation of the Student Data File. It is important to note that the Student Data File installation process will completely overwrite existing Student Data Files. Before you continue with the installation, be sure you want to overwrite the existing Medidata (student data) files.

When you are ready to begin installation of the Student Data File, click the [Install](#) button.



The Medisoft Student Data File installation progress bar indicates the progress of the installation. Click the [Finish](#) button to close the installation application. You are now ready to use the Student Data File within Medisoft®.



Technical Support for Medisoft® Advanced Version 19

Need help? Contact McGraw-Hill's Customer Experience Group (CXG).

Visit the CXG website at www.mhhe.com/support. Browse our FAQs (Frequently Asked Questions), register for a webinar, and/or contact a CXG representative.