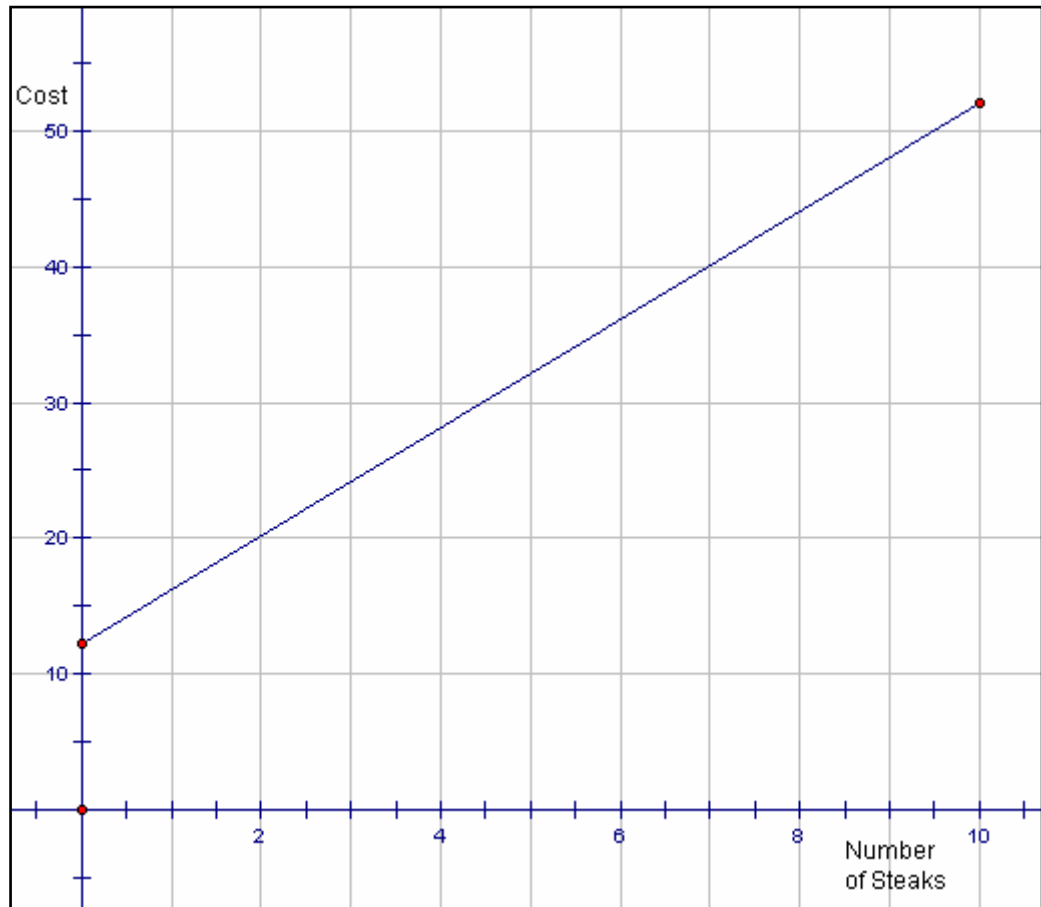


6.2 Key Concepts 3 Graph of a Partial Variation Worked Example

Example: A wholesale butcher sells steaks in bulk for \$4.00 per steak, plus a flat fee of \$12 for processing the order. Model this variation with a graph.

Solution: The constant part is \$12 and the variable part is \$4 per steak. The graph is shown.



Practice:

1. Tamara runs at 3 m/s. Since Susan is a faster runner, she offered Tamara a 10 m head start in a 50 m race. Model Tamara's position versus time with a graph.

2. A rubber band is 12 cm long. It is suspended from a hook, and weights are added. Each weight stretches the band 3 cm. Model the length of the band versus the number of weights with a graph.