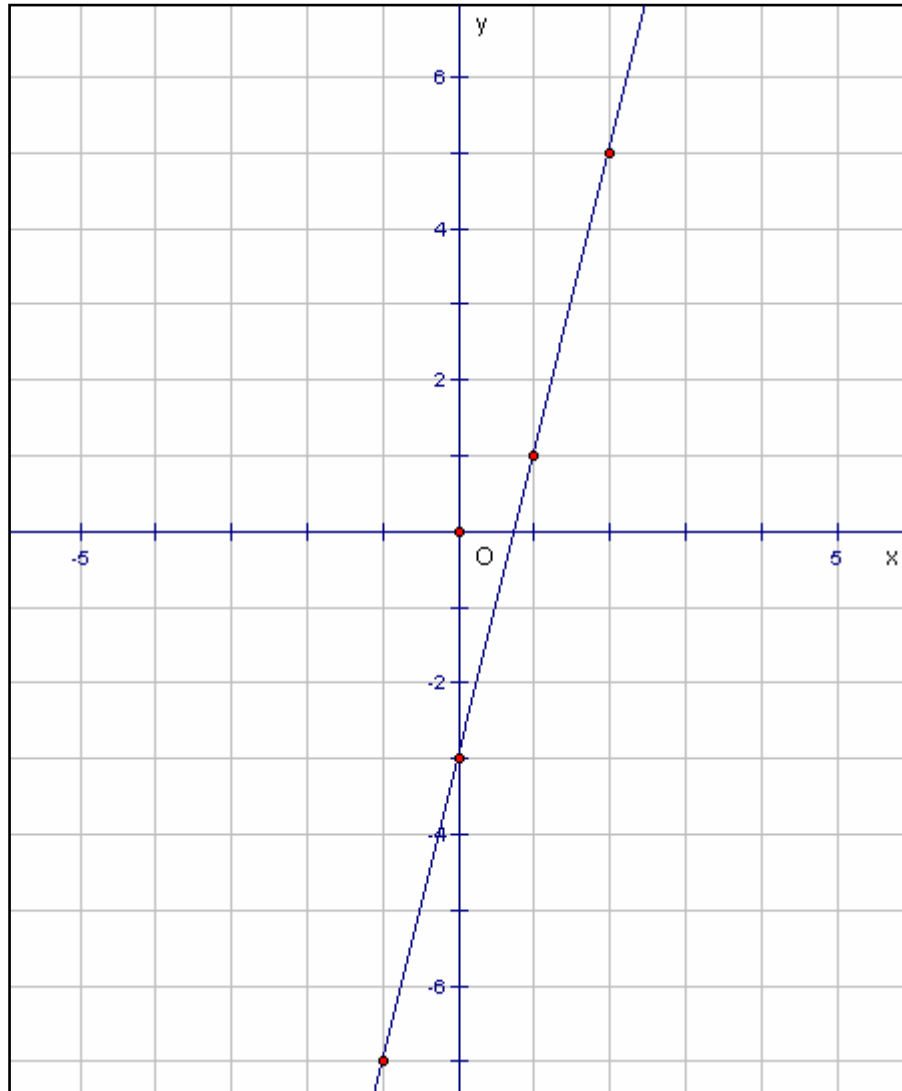


6.3 Key Concepts 1 Graphing Using a Table of Values Worked Example

Example: Complete the table of values shown for $y = 4x - 3$. Then, graph the relation.

x	y
-1	-7
0	-3
1	1
2	5

Solution: Substitute each given value of x in the given relation. Then, plot each point on a graph.



Practice:

1. Complete the table of values shown for $y = 2x + 3$. Then, graph the relation.

x	y
-1	
0	
1	
2	

2. Complete the table of values shown for $y = 3x - 1$. Then, graph the relation.

x	y
-1	
0	
1	
2	