

A Topical Approach

Examining life-span development topically allows developmental changes through the life span to be described in close proximity to one another so that students can make better connections between them. **Connections** play a key role in student learning and are a driving force behind *A Topical Approach to Life-Span Development*.

developmental **connection**

Brain Development

Might changes in the development of the adolescent brain be related to teens' mood swings and increased risk taking?
Chapter 3, pp. 106–107

Connecting Topical Processes Across the Life Span

- * **Developmental Connections** highlight links across topics of development and connections between biological, cognitive, and socioemotional processes.
- * **Connect** questions within chapters in end-of-section Review, Connect, and Reflect sections allow students to practice making connections among development topics.

Connecting Research to What We Know About Development

- * **Connecting with Research** describes a study or program to illustrate how research in development is conducted and how it influences our understanding of the discipline.
- * **Leading experts** in the field provided detailed input on the content and offered key insights on new research and findings in their fields of study.
- * **The most current coverage of research**—More than 1,200 citations from 2011, 2012, 2013, and 2014.



connecting with adolescents

Are Social Media an Amplification Tool for Adolescent Egocentrism?

Earlier generations of adolescents did not have social media for connecting with large numbers of people; instead, they connected with fewer people in person or via telephone. Might today's teens be drawn to social media and its virtually unlimited friend base to express their imaginary audience and sense of uniqueness? A recent analysis concluded that amassing a large number of friends (audience) may help to validate adolescents' perception that their life is on stage and everyone is watching them (Psychster Inc, 2010).

A look at a teen's home Twitter comments may suggest to many adults that what teens are reporting is often rather mundane and uninteresting. Typical tweets might include updates like the following: "Studying heavy. Not happy tonight." Or "At Starbucks with Jesse.

Lattes are great." Possibly for adolescents, though, such tweets are not trivial but rather an expression of the personal fable's sense of uniqueness.

Consider also the Web site *DoesThisLookStupid.com*, which has been very popular with adolescents. The teens don't visit the Web site to obtain fashion tips from others wearing clothes similar to theirs. Rather, they think their sense of style is so unique that they feel the need to post photos of what they are wearing that day to obtain feedback. As part of this process, the teens assume that everyone actually cares about what they are wearing.

What do you think? Are social media, such as Facebook and Twitter, amplifying the expression of adolescents' imaginary audience and personal fable sense of uniqueness?

Connecting Development to the Real World

* **Connecting Development to Life** describes the influence of development in a real-world context of topics such as strategies for getting more exercise, living a more creative life, and making friends.

* **Connecting with Careers** and the **Careers Appendix** profile careers that require education and training in various areas of human development to show students where knowledge of human development could lead them.

* **Reflect: Your Own Personal Journey of Life** questions at the end of each section ask students to reflect on some aspect of the discussion in the section they have just read and to connect it to their own life.

* The **Milestones** program enables students to track the early age periods that involve physical, social, and emotional development in real children. This video program captures a handful of children as they reach developmental milestones in a longitudinal view of real development.



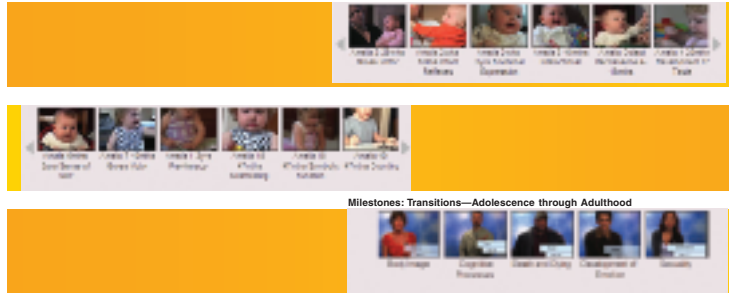
(Left) Manti Te'o; (Right) Michelle Przybycki and Andy Lalinde.

What do you think? Is searching online for romantic relationships a good idea? Might it work better for young adults, middle-aged adults, and older adults than adolescents and emerging adults? What are some cautions that need to be taken if you pursue an online romantic relationship?



topical life-span development—

real life, real development, better outcomes



Watch Amalia develop from her first years of life through age six.

Milestones—real life, real development

McGraw-Hill’s Milestones is a powerful tool that allows students to experience life as it unfolds, from infancy through emerging adulthood. Milestones is **the only longitudinal video of its kind** and allows students to track the early stages of physical, social, and emotional development in real children. By watching one child over time or comparing various children, Milestones provides a unique, experiential learning environment that can only be achieved by watching real human development as it happens—all in pre-, transitional, and post-milestone segments.

In later years, students meet a series of people—from adolescents to individuals in late adulthood—and examine changes that occur throughout the life span. Students are given the opportunity to think critically while exploring the differences in attitudes on everything from body image to changes in emotion, sexuality, cognitive processes, and death and dying.



Adaptive Learning and Reading

New from McGraw-Hill Education, LearnSmart Advantage is a series of adaptive learning products fueled by LearnSmart, the most widely used and intelligent adaptive learning resource proven to improve learning since 2009.



LEARNSMART®

How many students *think* they are prepared but struggle on the first exam? *LearnSmart for Life-Span Development* helps students understand what they know and don’t know about specific learning objectives—helping them to focus their time and attention on the most difficult concepts for their individual needs. Based on Bloom’s Taxonomy, LearnSmart Advantage creates a customized study plan, unique to every student’s demonstrated needs. With virtually no administrative overhead, instructors using LearnSmart Advantage are reporting an increase in student performance by one letter grade or more.

SMARTBOOK™

SmartBook is the first and only adaptive reading experience available for the higher education market. Powered by an intelligent diagnostic and adaptive engine, SmartBook facilitates and personalizes the reading process by identifying what content a student knows and doesn't know through adaptive assessments. As the student reads, SmartBook constantly adapts to ensure the student is focused on the content he or she needs the most to close any knowledge gaps.

connect® LIFESPAN

McGraw-Hill Connect Life-Span Development engages students in the course content so they are better prepared, are more active in discussion, and achieve better results.

Assignable and Assessable Activities

Connect Life-Span Development offers a wealth of assignable and assessable course materials. Videos, interactivities, and self-assessments engage students in human development course concepts. Detailed reporting helps the students and instructors gauge comprehension and retention—*without adding administrative load.*

Streamlined Course Management and Powerful Reporting

Whether a class is face-to-face, hybrid, or entirely online, *Topical Life-Span Development* provides the tools needed to reduce the amount of time and energy that instructors must expend to administer their course. Easy-to-use course management allows instructors to spend less time administering and more time teaching.

- **At-Risk Student Reports:** The At-Risk report provides instructors with one-click access to a dashboard that identifies students who are at risk of dropping out of a course due to low engagement levels.
- **Category Analysis Reports:** The Category Analysis report is the place to go to and find out how your students are performing relative to specific learning objectives and goals.
- **Item Analysis Reports:** The Item Analysis report is the best way to get a bird's-eye view of a single assignment. You'll be able to tell if students are improving or if the concepts are something you want to spend additional time on in class.
- **Student Performance Reports:** The student performance report helps you search for a specific student in your class and focus on that student's progress across your assignments.
- **Assignment Results & Statistics Reports:** The Assignment Results report shows your entire class's performance across all of your assignments. Assignment Statistics reports will give you quick data on each assignment including the mean score, high score, and low scores, as well as the number of times it was submitted.

